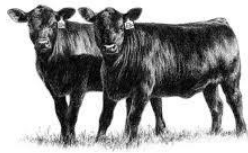


Department – BEEF

Superintendent:
Herman Stuke (719) 760-2157



Rules:

1. Please read the complete general rules and the beef rules found in the [El Paso County 4-H & FFA Livestock Exhibit Requirements](#). Please go to the CSU Extension El Paso County 4-H Fair resource webpage to access the 4-H beef rules: <http://elpaso.extension.colostate.edu/el-paso-county-fair-resources/>
2. Maximum of three (3) market cattle per exhibitor. In breeding classes, all exhibitors are limited to two entries per class.
3. **Fees:** Showmanship is free for all Beef 4-H exhibitors. Breeding beef classes are **\$5.00** per animal entry. Market beef classes are **\$10.00** per animal entry.
4. **Stalls:** Market Beef stalls are \$5.00 per animal. An additional \$5.00 per animal stalling fee will be charged for breeding animals needing their own stall for fair week.
5. Fair Entry payments are due to the CSU Extension Office by **Friday, June 30, 2017**.

Using Fair Entry:

1. Please first download or print the Fair Entry instructions and review the information found on the El Paso County 4-H Fair Resource page: <http://elpaso.extension.colostate.edu/el-paso-county-fair-resources/>
2. Go to <https://fairentry.com/> and click on “find your fair” to locate the 2017 El Paso County Fair.
3. The Fair Entry online system works best if you are using **Google Chrome** or **Mozilla Firefox** as your search engine. Users may experience errors when using older versions of Internet Explorer.
4. For families with multiple children - Be sure to register all entries for each exhibitor in the family before proceeding to the Payment section.
5. When you get to the “Review Your Entries” step it is suggested that you click on the “detail” button rather than the summary button to review all the classes you have selected.
6. Click the “Submit” button **ONLY** when you have reviewed and completed your entries. Entries are not final until they have been submitted.

7. Check your email inbox for a confirmation email with a list of your entries and instructions regarding fees. You will receive a second email when your entries have been approved by the CSU Extension Office. Please send in payment after you receive the second e-mail stating the entries have been approved.
8. If you experience a glitch with the Fair Entry online system or receive an error message, be sure to write down the error message and contact the CSU Extension El Paso County 4-H Office for assistance at **(719) 520-7698**.
9. Fair Entry will prompt you to “add an animal” when necessary to declare a specific animal for a class. If you already entered beef animal ID information in 4HOnline it should be available for you to select from. Otherwise, you will need to “add an animal” and enter animal identification information into Fair Entry. Have your animal records handy when using Fair Entry so you can refer to your records.

Helpful Hints:

1. Use this tool to select the classes the 4-H Beef Project member intends to exhibit/participate. Check off the classes and then have the tool handy when you log into the Fair Entry system to help the computer user remember to select all the appropriate 4-H beef project classes.
2. Be aware that Fair Entry lists divisions and classes in alphabetical order. This tool is designed to match the Fair Entry alphabetical listing.
3. **Showmanship Reminder** – each 4-H member is required to participate in Showmanship! If a 4-H member plans to exhibit both breeding and market animals, plan to enter both the breeding and market showmanship classes.
4. **Fair Eligibility** - Don’t forget that to be eligible for the El Paso County Fair, you must be enrolled in the project you plan to exhibit.

Department: Beef (ABE)

Division:

Livestock: Beef Showmanship

(All exhibitors needs to participate in showmanship)

Class:

□13: ABE13J Market Cattle Showmanship Junior
(4-H member age 8 to 10 as of December 31)

□13: ABE13M Market Cattle Showmanship
Intermediate

(4-H member age 11 to 13 as of December 31)

13: **ABE13S** Market Cattle Showmanship Senior (4-H member age 14 to 18 as of December 31)

9. **ABE09J** Breeding Cattle Showmanship Junior (4-H member age 8 to 10 as of December 31)

9. **ABE09M** Breeding Cattle Showmanship Intermediate

(4-H member age 11 to 13 as of December 31)

9. **ABE09S** Breeding Cattle Showmanship Senior (4-H member age 14 to 18 as of December 31)

Division:

Livestock: Breeding Beef

- Breeding beef cattle will be stalled, shown and released on Opening Saturday.
- Animals will be stalled from 7:00 to 9:00 a.m.
- Release will be after 7:00 p.m.

Class:

1: **ABE01** Junior Bull Calf (calved on or after January 1 of the current year. Under 8 months.)

2: **ABE02** Junior Heifer Calf (calved on or after January 1 of the current year. Under 8 months.)

3A: **ABE03A** Senior Bull Calf (12 months or younger as of the day of the show)

3B: **ABE03B** Senior Heifer Calf (12 months or younger as of the day of the show)

4: **ABE04** Junior Yearling Heifer (calved between January 1 and August 31 of the previous year. Age 13-19 months.)

5: **ABE05** Senior Yearling Heifer (calved between September 1 and December 31. Between 20 and 24 months.)

6: **ABE06** Cow/Calf Production (Cow of any age with her current year's calf on her side)

7: **ABE07** Three Generation Production (Producing cow with her heifer and either a junior heifer or junior bull calf.)

8: **ABE08** Breeding Beef Producer (See producer class rules. Only the calf/calves will be in the show ring.)

Division:

Livestock: Market Beef

Class:

10: **ABE10** Market Beef Producer (See producer class rules. Please also select class 11 or 12.)

11: **ABE11** Market Beef Heifer

12: **ABE12** Market Beef Steer (See Market Steer rules.)

Division: Premier Exhibitor Beef

Class:

A**PE01** Premier Exhibitor Contest – Beef (See Premier Exhibitor Contest rules.)

Be sure to add stalls for your animals on exhibit! If your breeding animals are staying all week, you will need to pay for additional stalls.

Division:

Livestock: Beef Stalls

Class:

Market Beef Stall (first market animal) \$5

Market Beef Stall (second market animal) \$5

Market Beef Stall (third market animal) \$5

Breeding Beef Stall if no market beef or staying all week (first breeding animal) \$5

Breeding Beef Stall if no market beef or staying all week (second breeding animal) \$5

Breeding Beef Stall if no market beef or staying all week (third breeding animal) \$5

Reminder – Are you in more than one 4-H Project? Be sure to add your other 4-H project classes in Fair Entry before you hit submit! Select a new Department and Division in Fair Entry to enter additional 4-H project exhibits!

