



EL PASO COUNTY  
COLORADO STATE UNIVERSITY  
EXTENSION

# 4-H *on the 4th*

June | 2022



# Table of Contents

Pg. 2

<b><u>EPC 4-H Announcements</u></b>			<b><u>Project Corner</u></b>		
	Club Leader Spotlight	<a href="#">P. 3</a>		Shooting Sports Competitions	<a href="#">P. 13</a>
	4-H Swag Fundraiser	<a href="#">P. 3</a>	<b>7/9</b>	Shooting Sports Awards	<a href="#">P. 13</a>
	Club Officer Elections & Training	<a href="#">P. 3</a>		Remind App	<a href="#">P. 14</a>
<b><u>El Paso County Fair</u></b>			<b>6/11</b>	Master Showman Clinic	<a href="#">P. 14</a>
<b>5/31</b>	FairEntry Opens	<a href="#">P. 4</a>	<b>6/17</b>	Horse Project Pizza & Paint Party	<a href="#">P. 14</a>
<b>6/10</b>	FairEntry Help Desk	<a href="#">P. 4</a>	<b>6/18 &amp; 6/19</b>	EPC Dog Shows	<a href="#">P. 15</a>
	FairEntry Registration Guides	<a href="#">P. 5</a>	<b><u>Advisory Committee Meetings</u></b>		
	What's The Why Behind Your Online Profile?	<a href="#">P. 5</a>	Small Animal Advisory Committee		<a href="#">P. 17</a>
	What is Premier Exhibitor?	<a href="#">P. 6</a>	Livestock Advisory Committee		<a href="#">P. 17</a>
<b>7/5 - 7/7</b>	Large Livestock Exhibitor Meetings	<a href="#">P. 6</a>	Horse Advisory Committee		<a href="#">P. 17</a>
	Livestock Announcers Needed	<a href="#">P. 6</a>	Tabletop Advisory Committee		<a href="#">P. 17</a>
<b>7/2</b>	Affordable Health Certificates	<a href="#">P. 7</a>	Shooting Sports Advisory Committee		<a href="#">P. 17</a>
	Open Pregnancy Verification	<a href="#">P. 7</a>	Youth County Council		<a href="#">P. 17</a>
	Load In Schedule	<a href="#">P. 8</a>	<b><u>Other Events</u></b>		
	Livestock Stalling	<a href="#">P. 8</a>	<b>6/9</b>	Emergency Preparedness Webinar	<a href="#">P. 16</a>
	Exhibitors Livestock Stall Prep	<a href="#">P. 8</a>	<b>6/11</b>	North Park American Rumble 2022	<a href="#">P. 18</a>
	Out of County Form	<a href="#">P. 9</a>	<b>7/8</b>	Hoof Trim Day	<a href="#">P. 19</a>
<b>6/29</b>	Horse & Mini Horse Written Test & Patterns	<a href="#">P. 9</a>	<b>6/11</b>	Beat The Heat Classic	<a href="#">P. 20</a>
	4-H Horse T-shirts	<a href="#">P. 10</a>	<b>7/9</b>	Rocketry Extravaganza	<a href="#">P. 26</a>
	Fairgrounds Camping Information	<a href="#">P. 11</a>		Adams County 2022 Show Series	<a href="#">P. 27</a>
<b>7/9</b>	Fair Cleanup	<a href="#">P. 11</a>	<b><u>Other Announcements</u></b>		
<b>7/18</b>	Barn Olympics Signup	<a href="#">P. 11</a>		CSU Spur Terra Grand Opening	<a href="#">P. 28</a>
	Calling Helping Hands!	<a href="#">P. 12</a>		Colorado State University is Hiring!	<a href="#">P. 28</a>
<b>7/20</b>	Fashion Revue	<a href="#">P. 12</a>			
<b>7/22</b>	4-H Dance	<a href="#">P. 12</a>			

## Club Leader Spotlight

**Sandy Hoihjelle**

**Winner's Edge 4-H Club**

- 4-H Volunteer Years: 21 years
- Favorite Color: Blue/Teal
- Favorite Candy or Sweet Treat: Cherry Pie
- Hobbies: Playing with her animals

**Acknowledgment: We would like to thank Sandy for her wide variety of volunteer roles and the years she has given to the 4-H program in El Paso County! She is passionate about helping and developing youth. She has built and established a large goat program in our county. Thank you for you do for our county and our youth!**



## 4-H Swag Fundraiser

**NEW 4-H DESIGNS** are now available! Now is your chance to purchase one of kind t-shirts that represent the 4-H program. Choose from super cute, unique designs that will fit any 4-H youth or adult! You can purchase each design in glitter or plain.

Every purchase will help support the 4-H youth in the miniature horse project. All purchasing and shipping will happen directly through the business website. Don't forget to put your size in the comment section when you submit your order!

[Place your order here.](#)

## Club Officer Elections & Training

While most of us aren't thinking about Club Officer Elections, now is the perfect time to start! Leaders can help stack the odds of success for their youth by electing 4-H Club Officers in May or June of the prior 4-H year. Holding elections before the next year allows youth to work with past officer teams, be ready to attend trainings, and start their new 4-H year off more prepared. There are several clubs in El Paso County who already follow this model of electing officers early. If you're wondering how this might work within your club, reach out to Charity with any questions, feedback, or concerns!



## FairEntry & Livestock Sale Seller Profile Help Desk: June 1 & 10

**What:** Fair Entry Registration for all 4-H members/families

**When:** Wednesday, June 1 and Friday, June 10, 1:00—6:00 PM

**Where:** PPLD East Library Location—5550 N. Union, 80918. The Learning Lab is on the first floor of the East Library, past the F1 and F5 study rooms.

4-H Families in any 4-H project who need help registering for the El Paso County Fair through FairEntry: join us on one of our Help Desk days! We will be available to help register for exhibits and contests and answer any questions you might have. Someone from the Sale Committee will also be present to help create seller profiles for Livestock Sale. If you are unable to attend, please [email Rain Gray](#).

## FairEntry Opens May 31



**Pre-entry for the El Paso County Fair will open on May 31 and is required for all 4-H General, 4-H Consumer Science, 4-H Cloverbud and 4-H Animal exhibits.** All exhibits/animals must be pre-entered into the online FairEntry system. 4-H families will use their 4HOnline username and password to log in to the FairEntry system. FFA families should contact the El Paso County Extension Office to be provided a username and password.

**Exhibits must be entered by Monday June 13, 2022. A late fee of \$25.00 per exhibitor will be assessed for entries received between June 13-15, 2022. After June 15, 2022, absolutely no entries will be accepted.**

Once registration is complete and submitted by the family for all members participating in county fair, it will be sent to CSU Extension 4-H staff for approval. Once approved, payment instructions will be sent via email. Payment **SHOULD NOT** be sent until all classes are approved by CSU Extension staff. **Payment must be received by 4:30 p.m. Friday June 17, 2022.** It is the member's responsibility to check with the Extension Office to make sure the entry and payment were completed by the deadline.

For help with computer pre-entry, be sure to attend one of the Help Desk days!



## FairEntry Registration Guides

The Registration Guides for each animal project area are now posted [on the website!](#) These guides are a great supplement sheet to help you register for fair. Each simplified document lists requirements and classes offered. These align with classes offered in FairEntry. It is **highly recommended** that you use these documents when registering for fair:

**2022 Fair Registration Instruction Sheet** (second document on the linked page)

**2022 Registration Guides for Animal Projects** (bottom of linked page, fourth column)

**2022 Premium Books** that outline the classes and rules (bottom of linked page, first column)

<https://elpaso.extension.colostate.edu/fair-resources/>



## What's the Why Behind Your Online Profile?

### Why is it so important to get your profile set up?

The Sale Committee has contracted with the online platform [stockshowauctions.com](https://stockshowauctions.com) to allow you additional opportunities to market your project and reach more buyers.

If you remember from last month's article, **the more you interact with buyers, the more they may be willing to support you and your project.** What you might not know is how this affects the sale.

We are unable to make the sale viewable to the public until every youth who is going to be in the auction has a profile created. Once all the profiles are online, we can "turn on" the sale platform, and it lets us do the live auction and the online auction together as a simulcast, much like some of the bigger auctions you see on TV.

If you have multiple market projects, you can put info and pictures from each project on your profile, and once you have figured out which animals will go to the auction, just go in and delete the extras.

This also gives you a chance to get out of state friends and family involved in your project, and lets them bid on your animal or put add-on funds towards you. This is a great way to really be able to market yourself and the good things you do in 4-H.

Get creative and have fun with your profile. You can even add videos! **Profiles are required to be set up before we can accept sale releases this year.** Sale Committee members will be available at the Help Desk days, June 1 and June 10, and at the Master Showman clinic on June 11.

## What is Premier Exhibitor?

All exhibitors are encouraged to enter! **All entries should be made in FairEntry.**

This award will be given to the outstanding 4-H member (ages 8-18) in each of the project species: beef, sheep, swine, goat (breeding, market, dairy, and pygmy), rabbit, poultry, dog, horse, llama/alpaca and miniature horse projects.

The focus of this award is on rewarding excellence in total project management. Contestants will be evaluated on several different areas depending on the species. **Please refer to your premium books to see how the scoring is calculated in each of the species.**

All premier exhibitor study guides are listed [on the fair resources page](#) of the website for the youth who want to get a head start on studying for the premier exhibitor tests!

## Large Livestock Exhibitor Meetings

Calling all youth showing large livestock animals at county fair! Each livestock species will be holding a zoom meeting the week before fair to go over the requirements, expectations, questions, and any last-minute information. The schedule along with the zoom link is listed below, so please attend!

Topic: Large Livestock Exhibitor Meeting

Date	Time	Species
Tuesday, July 5	6:00 PM	Sheep
Tuesday, July 5	7:00 PM	Beef
Wednesday, July 6	6:00 PM	Goat (Pygmy, Dairy, Breeding, Market)
Thursday, July 7	6:00 PM	Swine

Join Zoom Meeting:

<https://zoom.us/j/97207965028> Meeting ID: 972 0796 5028

## Announcers for Livestock Shows at County Fair Needed

The Livestock Advisory Committee is seeking youth to participate as an announcer for the livestock shows at county fair. Any youth 14 years or older (FFA/4-H) can apply, and training will be offered.

An announcer's seminar will be held June 30<sup>th</sup> at 6:00 pm at the Extension Office, and a **practice run through will be held July 6<sup>th</sup> at 6:00 pm at the fairgrounds.** If you are interested, please sign up using [this google survey link](#).



## Health Certificates for County Fair

Animals that **required to have health certifications for County Fair issued within 14 days prior** to stalling at fair are:

- Llama/Alpacas
- Miniature Horses
- All Livestock

**Each animal must be individually identified on the certificate.**

## Affordable Health Certificates Offered on July 2

Every year, the Livestock Advisory Committee offers 4-H members the opportunity to haul their animals to a specific location to receive a health certificate for county fair animals.

This will take place on **Saturday July 2, 2022 at Latigo Trails Equestrian Center (13710 Hallelujah Trail)**

**Health Certificates cost \$5/animal and CASH ONLY (exact cash preferred)**

We will be set up by the outside roping/rodeo arena and have volunteers help directing the flow of traffic (same location as previous years). If you would like to obtain a health certificate on this day you will need to **fill out the survey link below by Friday June 17, 2022 at 12 PM**. We will then assign five-minute time slots to 4-H families. Look for an email that contains the schedule and updates about procedures.

All livestock **MUST** be accompanied by an official Health Certificate issued **within 14 days prior to the start of fair**. Each animal must be individually identified on the certificate. At fair, you will need to make sure you have a copy of your health certificate for every day you enter the fairgrounds with animals.

Survey Link for Health Certificates:

[https://docs.google.com/forms/d/e/1FAIpQLScXsx8-ziiH2ByRqIY6lwq6ccBj6M7AHvVASAPfwxNMHMPoSA/viewform?usp=sf\\_link](https://docs.google.com/forms/d/e/1FAIpQLScXsx8-ziiH2ByRqIY6lwq6ccBj6M7AHvVASAPfwxNMHMPoSA/viewform?usp=sf_link)

## Open Pregnancy Verification for Market Heifers

All market heifers must be accompanied by a certificate issued by a licensed veterinarian verifying the heifer is pregnancy tested OPEN within 30 days of the El Paso County Fair.



## Load In Schedule for County Fair

All livestock/small animals must be accompanied by an **official Health Certificate issued within 14 days prior to the start of fair**. Each animal must be individually identified on the certificate.

At fair you will need to **make sure you have a copy of your health certificate for every day you enter the fairgrounds with animals**.

Families: enter through the south gate and proceed to the fire land. Volunteers will direct trucks and trailers at that point. **Only market swine will weigh off the trailer, no exceptions**. Trucks and trailers will exit through the fire lane gate. Please drive with caution when on the fairgrounds.

**Market Animals, Small Animals, Miniature Horse, and Tack cannot be loaded out before 9 AM on Sunday July 24.**

Date	Time	Species
Saturday July 16	6:00-9:00 AM	Breeding Livestock (Load out after 7 PM), Dairy + Pygmy Goat
Saturday July 16	9:00 AM- 12:00 PM	Small Animal & Miniature Horse Load In
Sunday July 17	6:00-8:00 AM	Market Swine & <b>MUST WEIGH OFF TRAILER</b>
Sunday July 17	8:00-11:00 AM	Market Beef, Market Sheep, Market Goat <b>LOAD IN</b>
Sunday July 17	8:00-11:30 AM	Market Beef, Market Sheep, Market Goat <b>WEIGH IN</b>

## Livestock Stalling

Stalling will be paid at livestock (**CASH ONLY**) when youth pick up their exhibitor packet, so please plan accordingly. **Stalling assignments will be posted in the respective barns on July 9**. Exhibitors are responsible for brining in their own bedding for their animals. **Please make sure it aligns with the rules outlined in the premium books.**

## Exhibitors Livestock Stall Prep

It is highly encouraged that all livestock exhibitors set up their stalls with shavings and equipment **before the start of fair**. You can come to the fairgrounds **from Wednesday July 13 AFTER 3-5 PM, normal business hours Thursday July 14, and normal business hours Friday July 15**. If youth do not take advantage of the pre-set up, they will need to haul everything by hand from their parked trailer in the south lot outside the fairgrounds to the barns. Youth are **not allowed** to unload tack, equipment, or feed during our scheduled animal load in times.

## Out of County Form for Showing Livestock

In reference to the 2022 4-H/FFA Livestock Premium Book we have two items concerning multiple animals in the same class.

In the event an exhibitor has multiple animals in the same class:

1. A 4-H/FFA youth in good standing from the county with parent permission may show the extra animal
2. A 4-H/FFA youth in good standing from out of county with parent permission may show the extra animal **in addition to meeting these requirements:**
  - An out of county form request must be filled out and submitted to the CSU Extension Office **four weeks before the first day of County Fair**
  - A youth is limited to **2 forms maximum**
  - Each form will cost \$5
3. If an exhibitor in a market class ends up with multiple animals in the same class, they can **elect to move one animal up to the next heavier weight class but not down to the lighter class.**

You can find the Out of County Form on the El Paso County website.

[Out of County Form](#)



## Horse & Miniature Horse Written Test & Patterns

For all the horse youth participating in County Fair, the written test will take place on **June 29, 2022, at Kit Carson Riding Club from 6:30-7:30 PM**. This is a requirement to show at county fair, so please make sure you attend. The study guide is listed on the [fair resources page of the website](#). Patterns will also be distributed to the exhibitors for fair after the written tests.

## 4-H Horse T-shirts

The El Paso County 4-H Horse Advisory Committee is getting ready for County Fair and selling 4-H Horse T-Shirts and Hoodies!

There are two designs available to pick from. You will be able to choose which design you want and select a hoodie or t-shirt to place the design on. ALL 4-H Horse Exhibitors will receive a t-shirt with the Chin-up design as long as they are registered and approved in FairEntry for County Fair by **June 13<sup>th</sup>**. Exhibitors are welcomed to purchase additional apparel items. Family, volunteers, friends and supporters are also welcome to purchase apparel items-there is no cap.

Please visit this link: <https://forms.gle/f8z5Nfom8KJQvfsKA> to pre-order your apparel. Apparel orders will be available until **June 13<sup>th</sup>**.

HAC will accept cash or checks made payable to El Paso County 4-H Horse Advisory Committee. Payment is due **NO LATER** than **June 29<sup>th</sup>** at the Written Horse test. Payment can also be brought to the **June 14, 2022** HAC meeting at Kit Carson Riding Club.

Please contact Mercedes Glenn at [mpowers90@hotmail.com](mailto:mpowers90@hotmail.com) with any questions.

T-Shirts: \$20 (in black) sizes available are Youth XS-XL and Adult XS-4XL

Hoodies: \$30 (in forest green) sizes available are Youth XS-XL and Adult XS-4XL

Link to order: <https://forms.gle/f8z5Nfom8KJQvfsKA>

Preorders close: June 13<sup>th</sup>

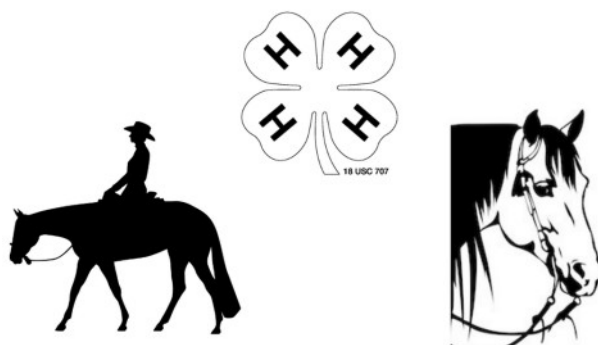
Payment Due: June 29<sup>th</sup> at Kit Carson Riding Club after the Written Test

Pick-up: \*June 29<sup>th</sup> (Pending any shipping delays)

**\*\*Cash or check ONLY-checks made payable to El Paso County Horse Advisory Committee**



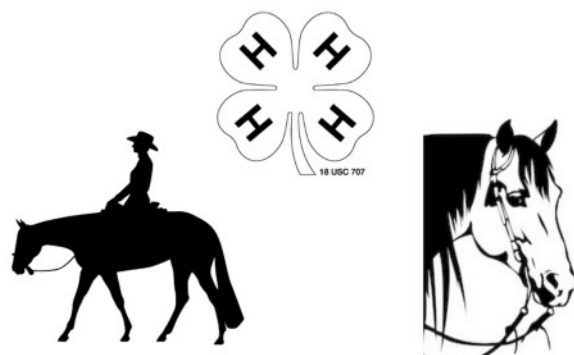
*Chin up*  
**HEELS DOWN**



2022 EL PASO COUNTY 4-H



*Eat. Ride*  
**SLEEP. REPEAT**



2022 EL PASO COUNTY FAIR



## Camping Information from the Fairgrounds

We are looking forward to a fantastic 2022 El Paso County Fair! Thank you for your dedication to your projects and the 4-H program. Click the link below to register and pay for your camping spot. You may also purchase additional family passes, additional tickets, and Dump services if you choose. [The website](#) will open **May 31st at noon and close on June 13th at 5pm.**

**Directions/Additional Information:** Camping spots are reserved on a first come first serve basis. There will be a processing fee associated with your registration. Before selecting your camping spot on the map you will want to choose your add ons (event tickets and passes) first. Otherwise you will be asked to make two separate purchases or start over. Then click the map button to purchase and to choose your camping site, otherwise you will be put in a random spot(s).

If you plan to bring a dog, the Fair Board requires you to send a request, as they approve dogs for the camping area. Please e-mail Matt Zeiger at [ranchhandfencing@yahoo.com](mailto:ranchhandfencing@yahoo.com).

**For questions or assistance you can contact the fair office at (719) 520-7880 or Matt Zeiger.**

**Packets will be available for pick up on July 9th from 8am to noon at the fair office, 366 10th Street Calhan, CO (SWINK HALL).** If you're picking up packets for additional people you will be required to sign for each of those packets.



## Fair Cleanup: July 9

Mark your calendars, because this year fair clean-up will be on **Saturday July 9, 2022, starting at 9 AM** at the fairgrounds. Please make sure you are available this day to help set up for County Fair!

## Barn Olympics Signup

Attention 4-Hers! Get your teams of six together and sign up for Barn Olympics on **July 18 (Monday of Fair) at 2:00PM, Owens Arena.** Individuals can also sign up.

Here is the link: <https://m.signupgenius.com/#/showSignUp/8050d4faaac2aa0fa7-barn>



## Calling Helping Hands!

**Do you enjoy talking with people? Do you love sharing about 4-H? Then we need your help!**

During county fair, the static project exhibits (located in the Whittemore building) are open to the public. We need smiling 4-H members, families, and leaders to help welcome people and answer questions about 4-H or projects. We will have superintendents present, and will provide all you need—just select a time slot that works best for you, and [sign up HERE!](#)

**[Sign Up HERE](#)**



**Helpers needed for July 16 – July 23 to staff welcome table in 3-hour shifts (10AM–1PM, 1–4PM, and 4–7PM)**

**Helpers needed for July 24 to assist with project pick up (9AM–12PM)**

4-H Fashion Revue

- Come join EPC Fair Queen as she introduces this year's best designs, modeled by the 4-H youth members, who sewed and designed the fashion forward creations.

Swink Hall  
3 PM Wednesday, July 20

YOU'RE INVITED TO AN  
**ICE CREAM PARTY AND SHOW**

COLORADO STATE UNIVERSITY EXTENSION

**4H DANCE**  
with  
**Youth County Council!**

On July 22nd,  
Friday evening

DJ,  
Concessions,  
Games

**AT SWINK HALL**  
Calhan Colorado  
County fair

## Shooting Sports Competitions

It's time for competition! Come support our youth to cheer them on and celebrate their improvements over the year. Schedule will be sent for competitors. The link for the [CO 4-H SHOOTING SPORTS RULEBOOK](#) includes details for each discipline and courses.

**Sunday, June 12 – [Archery](#) @ Hanover Range – 9AM**

**Tuesday, June 14 – [Air Rifle](#) @ CPW on Sinton Rd – 4PM**

**Thursday, June 16 – [Air Pistol](#) @ CPW on Sinton Rd – 4PM**

**Sunday, June 19 – [Muzzleload](#) @ Hanover Range – 9AM**

**Saturday, June 25 – [.22 Rifle](#) @ Hanover Range – 9AM**

**Sunday, June 26 – [.22 Pistol](#) & Shotgun @ Pikes Peak Gun Club – 9AM**

**Saturday, July 9 – **AWARDS** @ Fountain Creek – 2PM**

## Shooting Sports Awards: July 9

**Saturday, July 9th, 2PM**  
**Fountain Creek – Large Pavilion #1**

Come join us in celebrating our 2022 4-H Shooting Sports season and competitions! All 4-H families are invited to join us! Bring lawn chairs and sunscreen, and get ready for a fun day of celebrations and awards!





## Remind App For Animal Project Areas

For families that would like to stay up-to-date on deadlines and reminders, a Remind App was developed to help bridge communication. There will be three different groups which include Horse, Livestock, and Small Animal. This will be used as an additional communication tool throughout the year.

Please understand that the Remind App does **NOT** replace the monthly newsletter **OR** the responsibility of families to keep track of deadlines. This is simply an additional form of communication, however, will **NOT** be the source of all information. Please continue to reach out through email if you have questions.

Please refer to more detailed instructions sheets attached to this newsletter.

Horse Project Remind App Code: <https://www.remind.com/join/22epchorse>

Livestock Project Remind App Code: <https://www.remind.com/join/22epcstock>

Small Animal Remind App Code: <https://www.remind.com/join/22epcsa>

## Master Showman Clinic: June 11

On Saturday June 11, 2022, at Latigo Equestrian Center we are offering a free clinic for the youth to attend that will enhance their skills at the Master Showman Contest also known as Round Robin. This offers the youth a chance to learn to show or learn how to show other species before they start fair week. This year we are offering three Master Showman Contests:

Specialty (Llama/Alpaca, Miniature Horse, Dairy, Pygmy, and Fiber/Utility)

8:00-9:30 AM Outdoor Roping Arena

Small Animal (Dog, Cat, Cavy, Rabbit, and Poultry)

10:00-11:30 AM Community Room Upstairs

Livestock (Market Beef, Market Swine, Market Sheep, Market Goat, and Livestock)

12:00-2:00 PM Community Room Upstairs and will combine with Sale Committee

Please sign up for the clinic using the google survey: <https://docs.google.com/forms/d/e/1FAIpQLScvm0fZvmonBBUd-zvOAXt-IXS-89Qhp1aK81ik0i4uCXOfZA/viewform?>

## Horse Project Pizza & Paint Party: June 17

We are inviting all the youth in the horse project to come paint poles for our County Fair Show! Pizza will be provided for the youth that attend. Come join the fun and help us get ready for another great County Fair Horse Show! **June 17, 2022, from 5:30-8:30 PM at Latigo Equestrian Center.**



## 2022 EL PASO COUNTY 4-H DOG SHOWS

**Who:** Calling all members in the Colorado 4-H dog project!

**When-** June 18<sup>th</sup> and 19<sup>th</sup>; Check in at 8:00 A.M; Show will start at 9:00

**Where-** El Paso County Fairgrounds, Whitmore building

**What-** Join us for 2 days of fun at El Paso County's annual dog shows! We will be offering all showmanship, obedience, and rally classes both days!

**Food-** Concessions will be available.

**REGISTRATION FEES-** \$5 per dog per discipline/event (cash or check paid at Check in)

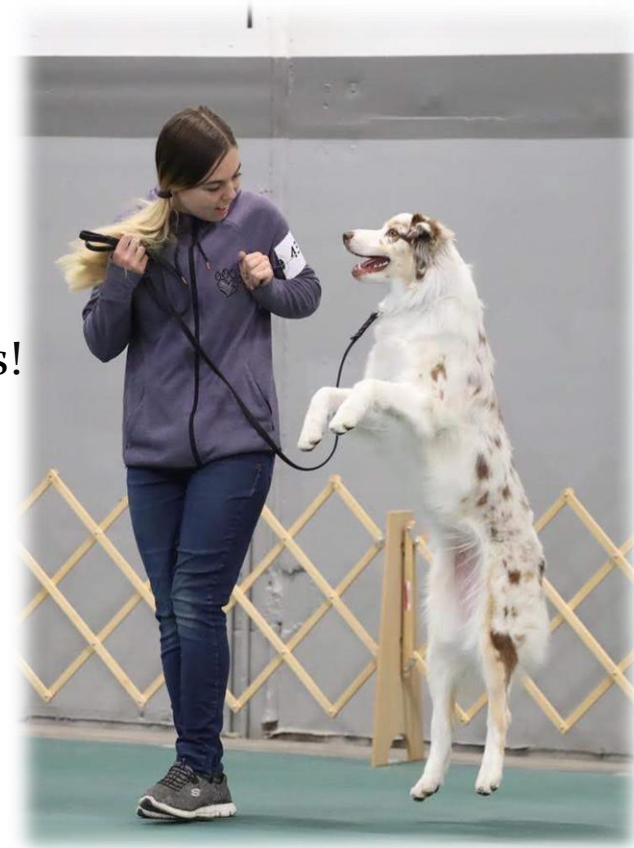
**Contact-**

Alicia Christie: [allnatural74@gmail.com](mailto:allnatural74@gmail.com) or text (719)351-6098

Sabrina Christie: [4hgirl.sc@gmail.com](mailto:4hgirl.sc@gmail.com)

**\*Pre-registration Required; Registration closes June 13<sup>th</sup>:**

**<https://forms.gle/q64QQ7xUSUNPPeaY7>**



**COLORADO STATE UNIVERSITY  
EXTENSION**



# Colorado State University Extension in El Paso County Presents Emergency Preparedness Webinar



What: Emergency Preparedness

When: June 9, 2022 6-9 p.m.

Where: Virtual

Cost: Free

\*Link will be sent prior to webinar



---

Click [here](#) to register no later than  
June 8, 2022 at 12 p.m.

---



Topics to be covered:

## **Emergency Preparedness-**

Robin Adair-Pikes Peak Regional Office of  
Emergency Management

## **Access and Functional Needs-**

Sadie Martinez-Colorado State of Homeland  
Security and Emergency Management

## **Before and After-Defensible Space Before a Disaster and Food Safety Clean-up After a Disaster-**

Michele Ritchie-El Paso County Extension



**COLORADO**

Division of Homeland Security  
& Emergency Management

Department of Public Safety



**EL PASO COUNTY**  
COLORADO STATE UNIVERSITY  
EXTENSION



# Advisory Committees

Pg. 17

## Horse Advisory Committee

**When:** Third Tuesday of the Month @ 6 PM

**Where:** Kit Carson Riding Club



## Livestock Advisory Committee

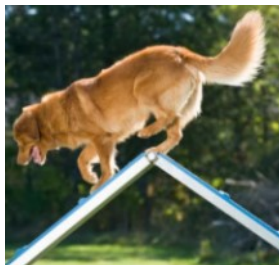
**When:** Second Thursday of the Month @ 7 PM

**Where:** Latigo Trails Equestrian Center

## Shooting Sports Advisory Committee

**When:** Third Friday of the Month @ 6:30 PM

**Where:** 3275 Akers Dr.



## Small Animal Advisory Committee

**When:** Second Monday of the Month @ 6:30 PM

**Where:** Akers Property

## Tabletop Advisory Committee

**When:** Third Thursday of the month @ 6:30 PM

**Where:** Extension Office, 17 N. Spruce St.



## Youth County Council

**When:** Last Tuesday of the Month @ 6:30 PM

**Where:** Extension Office, 17 N. Spruce St., enter in north side door



# North Park Jackpot

*American Rumble 2022*

*June 11th, 2022*

Jackson County Fairgrounds  
Walden, CO





# HOOF TRIM DAY

## ~JULY 8TH~

\*OPEN TO ALL 4-H & FFA  
MEMBERS WITH BEEF OR  
DAIRY CATTLE PROJECTS

\$35/Head  
(cash only-no  
bills over \$20)

-7:00-11:30am (Limited Time Slots Available)

-RSVP Due by July 1 to 719-743-2542 or  
[christine.schinkel@colostate.edu](mailto:christine.schinkel@colostate.edu)

-Animals must be halter broke and able to lead

-Location @ Eastern Colorado Veterinary Services (474 1st Ave  
Limon, CO 80828). Event Day Phone 719-775-8166



LINCOLN COUNTY  
COLORADO STATE UNIVERSITY  
EXTENSION

# **BEAT THE HEAT CLASSIC**



**SHOWMANSHIP AND  
ADULT  
SHOWMANSHIP  
TO FOLLOW EACH  
SPECIES SHOW**

**June 11th**  
**COLORADO STATE FAIR GROUNDS**  
**GATES OPEN AT 7:00AM**

**LAMB WEIGH IN 7:00AM-  
8:30 AM**  
**LAMB SHOW 9:00AM**

**GOAT WEIGH IN 7:00AM-9:30AM**  
**GOAT SHOW WILL BEGIN 20 MINUTES  
AFTER THE LAMB ADULT  
SHOWMANSHIP CLASS**

**BREEDING HEIFERS CHECK IN 2:00PM-3:30PM**  
**SHOW AT 4:00PM**

**BEEF WEIGH IN 3:30PM-5:00PM**  
**BEEF SHOW 5:30PM**

**CLINIC SPONSORED BY SURECHAMP**  
**30 MINUTES AFTER LAST CLASS OF GOAT**  
**SHOWMANSHIP**

**PLEASE CONTACT RILEY FARIS 719-240-4648 OR  
LACEY MCCURRY 719-568-0934 WITH ANY QUESTIONS**



# BEAT THE HEAT CLASSIC

MARKET LAMB, GOAT & BEEF – BREEDING HEIFER

JACKPOT SHOW



Saturday, June 11, 2022

Colorado State Fair Grounds – Livestock Pavilion

1001 Beulah Ave

Pueblo, Colorado 81004

Facebook Group: Beat the Heat Classic

## SCHEDULE

GATES OPEN	7:00 am
MARKET LAMB WEIGH IN	7:00am – 8:30 am
MARKET GOAT WEIGH IN	7:00 am – 9:30 am
MARKET LAMB SHOW	9:00am
MARKET GOAT SHOW	20 minutes after last lamb showmanship class
SURECHAMP CLINIC	30 minutes after last class of goat showmanship – Everyone is welcome, even if you are not showing!
BREEDING HEIFER CHECK IN	2 pm – 3:30 pm
BREEDING HEIFER SHOW	4:00 pm – showmanship will be with market beef
BEEF WEIGH IN	2:00 pm – 4:30 pm
BEEF SHOW	5:30 pm

Showmanship Classes will follow market classes. Order will be Senior, Intermediate, Junior and Adult.

# BEAT THE HEAT CLASSIC

## MARKET LAMB, GOAT & BEEF – BREEDING HEIFER JACKPOT SHOW



Saturday, June 11, 2022

Colorado State Fair Grounds – Livestock Pavilion

1001 Beulah Ave

Pueblo, Colorado 81004

Facebook Group: Beat the Heat Classic

### Pre-Entry Form

Entries will be accepted through mail or email. Entries will not be completed until payment has been received. Pre- Entry & Fees MUST be received by June 1, 2022 or additional fees will apply. You may enter at the show but will have additional fees.

#### Online Entries

1. Email entry form to  
[beattheheatclassic@gmail.com](mailto:beattheheatclassic@gmail.com)
2. Payment Options  
PayPal – [rockin.rshowfeeds@gmail.com](mailto:rockin.rshowfeeds@gmail.com)

OR

Mail Check – Rockin' R Show Feeds  
1982 Aspen Circle  
Pueblo, CO 81006

**\*Add exhibitor(s) names in memo on  
PayPal & Checks**

OR

#### Paper Entries

1. Mail Forms to: Rockin' R Show Feeds  
1982 Aspen Circle  
Pueblo, CO 81006
2. Payment Options  
PayPal – [rockin.rshowfeeds@gmail.com](mailto:rockin.rshowfeeds@gmail.com)

OR

Mail Check – Rockin' R Show Feeds  
1982 Aspen Circle  
Pueblo, CO 81006

**\*Add exhibitor(s) names in memo on  
PayPal & Checks**

Classes are open to all 4-H & FFA exhibitors ages 8-18 (age as of January 1, 2022).

Call Riley Faris at (719) 240-4648 or Lacey McCurry (719) 568-0934 or email  
[beattheheatclassic@gmail.com](mailto:beattheheatclassic@gmail.com) for additional information or questions.

UPDATE 3/14/2022 - The Breeding Heifer Division - Will ONLY take place if there are 15 animals entered before pre-entry deadline. Refunds will be given to exhibitors if the minimum number of Breeding Heifers is NOT met and do not wish to show in the Market Beef Show!

Exhibitor Name: \_\_\_\_\_ Date of Birth: \_\_\_\_\_

Address: \_\_\_\_\_ Phone: \_\_\_\_\_

City, State, Zip: \_\_\_\_\_ County: \_\_\_\_\_

Email: \_\_\_\_\_

**CLASS ENTRY**  
**\$10/HEAD**

**SHOWMANSHIP ENTRY**  
**\$20/SPECIES**

Species One Line Per Animal	Back Tag # <u>Official Office Use</u>

**Age Group:**

(as of January 1, 2022)

☐  
☐  
☐

Senior (15-18)

Intermediate (12-14)

Junior (8-11)

**Species:**

(Exhibitors may show another exhibitor's animal(s) if they do not own one to show in a species)

☐  
☐  
☐

Lamb

Goat

Beef

Entries turned in June 2<sup>nd</sup>-11<sup>th</sup> will have additional fees.

\$15/Head for each Animal

\$20/Species in Showmanship

			<b>Total</b>	<b>Office Use ONLY</b>  Date Received:  <b>Payment Type</b>  PayPal:  CK:
Office Fee (Includes T-Shirt)	<b>\$10</b>	<b>X 1</b>	<b>\$10.00</b>	
Market Animals (Breeding Heifers)	<b>\$10 per head</b>	<b>X</b>	<b>\$</b>	
Showmanship	<b>\$15 per species</b>	<b>X</b>	<b>\$</b>	
		<b>Total Fees</b>	<b>\$</b>	

T-Shirt Size – Please Circle

YS      YM      YL      S      M      L      XL      XXL

### General Rules

1. There will be **NO** stalling. Please be mindful of exhibitors around you and respect the facilities. (Please make sure to clean up your area of trash and REPORT and damage of the facilities to the office.)
2. Show officials of Beat the Heat Classic reserves the final and absolute decision to interpret all rules.
3. All animals will be the responsibility of the exhibitor throughout the duration of the show including care and welfare. We reserve the right to ask any exhibitor's animals to leave the premises if they show signs of disease or are deemed unsafe.
4. Show officials may refuse participation in any class to any exhibitor who does not adhere to all rules or if their animal is considered dangerous.
5. All exhibitors and their associates are asked to cooperate with all Beat the Heat Classic officials, judges and volunteers.

### Entry

1. Entry forms may be mailed or emailed but will not be accepted until payment is made via PayPal or Check.
2. Pre-Entries are \$10 per head and \$15 per species in showmanship. Pre-Entries will be accepted from March 1, 2022 – June 1, 2022.
3. Entries are \$15 per head and \$20 per species in showmanship. Entries will be accepted from June 2, 2022 – June 11, 2022 (Show Day). Cash, PayPal and Checks will be accepted on the day of the show.
4. Any check that is returned for in-sufficient funds will be charged a \$35.00 service charge.
5. A confirmation will be sent when entries are complete.
6. Exhibitors are not limited to the number of animals entered or showed.



7. Entry form must be signed by both exhibitor and parent/legal guardian stating they understand all rules.

### Show

1. There will be **NO** Breeding classes for sheep or goats. **The Breeding Heifer Division will ONLY take place if there are 15 animals entered before pre-entry deadline.** Refunds will be given to exhibitors if the minimum number of Breeding Heifers is NOT met and do not wish to show in the Market Beef Show!
2. Exhibitors must show their own animal in market class unless two or more animals are in the same class.
3. Showmanship – exhibitors may show another exhibitors animal in showmanship if they do not have that species at Beat the Heat Classic. Age divisions as of January 1, 2022 Junior (8-11), Intermediate (12-14) and Senior (15-18).
4. All animals must be broke and handled safely. If animal is deemed unsafe the animal will be asked to leave the ring and possibly the grounds.
5. All exhibitors must wear Beat the Heat Classic T-shirt and appropriate show attire.
6. Schedule is tentative and may be changed by show officials.
7. Official weigh in will take place to break classes.

### Premiums

1. All premium checks will be issued to the exhibitor.

In consideration of permission to participate in Beat the Heat Classic events and restricted areas, the undersigned participant on behalf of himself/herself, heirs, next of kin, spouses and assignees do hereby: Release, discharge and covenant not to sue Beat the Heat Classic, the State Fair Grounds, sponsors, officers and volunteers from any and all claims and liability arising out of occurrences which cause the undersigned injury, death, damage or property damage. The undersigned covenants to hold releasees from any claim, judgment or expenses arising out of participant's activities. If participant is a minor, releasor or parents or guardians of the undersigned minor agrees to release and indemnify the releasees from any loss, liability or damage or cost that may incur due to the presence or participation of the minor, whether caused by the negligence of the releasees or otherwise.

By entering the Beat the Heat Classic you are agreeing to be photographed and allowing Beat the Heat Classic to use those photographs as they see fit for marketing purposes.

Participant Signature: \_\_\_\_\_ Date: \_\_\_\_\_

Parent/Legal Guardian Signature: \_\_\_\_\_ Date: \_\_\_\_\_

# MODEL ROCKETRY LAUNCH DAY EXTRAVAGANZA

**JOIN US FOR A FUN FILLED DAY OF MODEL  
ROCKETRY!**

- **BRING YOUR MODEL ROCKET TO LAUNCH IT BEFORE FAIR**
- **ASK QUESTIONS ABOUT WAYS TO IMPROVE YOUR ROCKET BEFORE FAIR**
- **GET HELP WITH THE PROJECT RECORD BOOK**
- **IF YOU DO NOT HAVE A MODEL ROCKET, NO WORRIES! COME LAUNCH A PRE-BUILT ROCKET!**

**When: July 9th at 7:00 A.M.**

**Where: Arapahoe County Fairgrounds Rodeo  
Arena**

Register for this event by July 1st at:

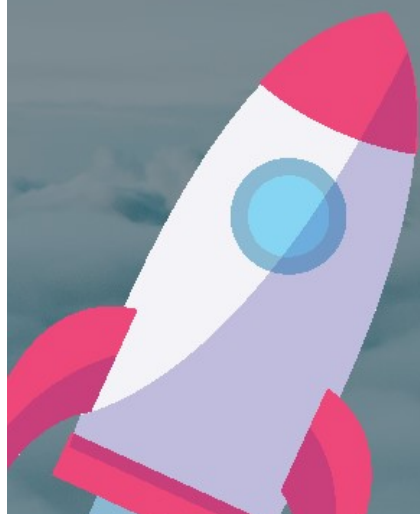
<https://www.eventbrite.com/e/model-rocketry-launch-day-extravaganza-2022-registration-260688104137>

Maximum of 100 participants



IF YOU HAVE QUESTIONS, CONTACT

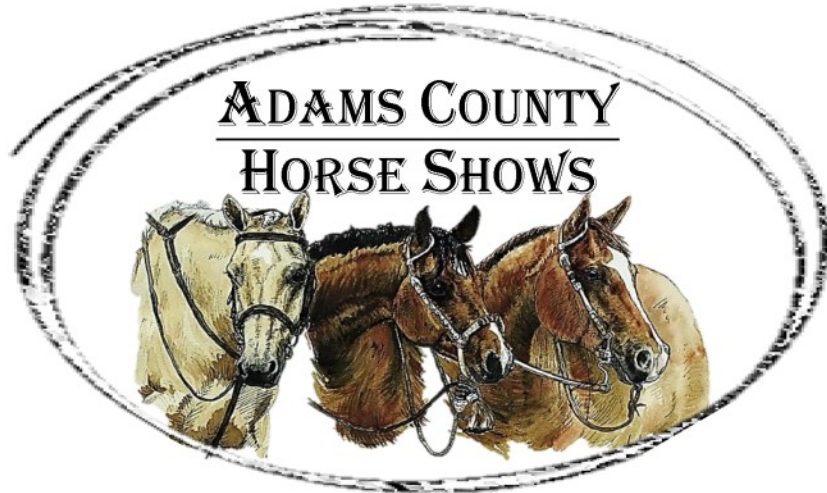
- ADAM FRICKE - ANFRICKE20@YAHOO.COM
- SHAYLEN FLOREZ - SFLOREZ@ARAPAHOEGOV.COM
- KATIE SEELHOFF - KATIE.SEELHOFF@COLOSTATE.EDU



**COLORADO STATE UNIVERSITY  
EXTENSION**

# 2022 Show Series

Adams County Regional Park; 9755 Henderson Road; Brighton, CO 80601



## PERFORMANCE & GYMKHANA

April 24<sup>th</sup>, July 17<sup>th</sup>  
& August 13<sup>th</sup>

Showmanship, English & Western;  
Barrels, Flags & Poles

- \* Registration @ 8 am \*
- \* Shows Start @ 9 am \*

*Performance Ribbons or  
Show Bucks thru 6th  
Gymkhana payouts through 5th  
Daily Top 5 High Point awards in  
English & Western divisions*

## RANCH HORSE

June 25-26<sup>th</sup>,  
September 17-18<sup>th</sup> &  
October 1-2<sup>nd</sup>

Cutting, Individual Cow Work,  
Ranch Trail, Ranch Riding, Ranch  
Reining & Ranch Pleasure

- \* Registration @ 8 am \*
- \* Shows Start @ 9 am \*

*Ribbons or Show Bucks thru 6th  
Daily Top 5 High Point awards  
in each division*

CoWN/SH-approved points



**2022 Year End Discipline High Point Awards** based on a 1-horse/1-rider combo in each discipline and age group (8-10, 11-13, 14-18, 19 & Over). Must show in at least two shows in the same discipline to qualify. Membership is required for points to accrue.

Find us online at: [ADCOHorse.com](http://ADCOHorse.com) -or- [f](https://www.facebook.com/ADCOHorse)ADCOHorse -or- [i](https://www.instagram.com/adcohorse)adcohorse

Questions? Contact Bill Acklin @ 720-933-3752 (wacklin\_cowboy@hotmail.com) or Kellie Stoll @ 303-946-4802 (mannerspro@gmail.com)

## CSU SPUR—New Building Grand Opening

Terra is the food and agriculture building at CSU Spur.

**Terra is Latin for earth.** Earth provides the nutrients to feed the world. Terra at CSU Spur brings agriculture to life, allowing people to understand where their food comes from, the challenges that lie ahead as the global population grows rapidly, and how we can all participate in shaping our food future.

When you visit the Terra building at CSU Spur, you'll find:

- Summer camps
- K-12 Ag Discovery Center
- CAM's Ag Academy Lab
- Urban agriculture research
- A food lab and public teaching kitchen
- Vertical gardens
- Rooftop greenhouses and a green roof



### TERRA GRAND OPENING EVENTS

#### **Terra Grand Opening**

*June 8, 11 a.m.-1 p.m.*

Join the milestone ribbon cutting for the Terra building, and stay for some fun, including lunch from local food trucks, live music, and building tours. (RSVP encouraged [here](#).)

#### **Kids Day at Terra**

*June 10, 9 a.m.-1 p.m.*

Curious kids of all ages are invited to their first experience at Terra! Enjoy a day of taste testing foods, painting with plant-based watercolors, the CSU Bug Zoo, and so much more!

#### **Community, Family and Friends Afternoon at Terra**

*June 11, 10 a.m.-2 p.m.*

Enjoy an open house to see (and smell!) all the Terra building has to offer – on-view labs, greenhouses, a kitchen, interactive exhibits, the best view of downtown Denver, and more. Plus, be part of a community art project that will hang in the Terra building!

## Colorado State University is Hiring!

The position is a Farmer's Market Price Reporter. This will be a temporary hourly position paying \$20/hr. For more information or to apply, please visit <https://jobs.colostate.edu/postings/105339>.