



El Paso County



4-H Horse Project

Table of Contents



Horse Project Committee Board Members, Superintendents, & CSU Extension	Page 3
Horse Project Communication Channels.....	Page 4
4-H Pledge, Motto, Slogan	Page 4
Things to consider when enrolling in a 4-H Horse Project	Page 5
4-H Horse Project Manuals	Page 5
Animal Identification Upload Instructions.....	Page 6
Record Book Tips	Page 7
Helmet Policy, Dress Code, and Registration of Project Horse/Ownership.....	Page 9
Safety Testing	Page 10
Beginner, Novice, New To You, and Leveled Groups.....	Page 10
County Fair Information.....	Page 12
State Fair/ Horse Events	Page 13
Clinics.....	Page 16
Equine Drug Use.....	Page 16
Cloverbuds.....	Page 16
Miniature Horse.....	Page 17
Accident Insurance	Page 17
Release Liability.....	Page 17
Sportsmanship and Conduct	Page 17
Horse Judging, Horse Bowl, Hippology, Demonstration Contest	Page 17
Competitive Trail Ride	Page 18
Freestyle Reining class.....	Page 19
Schedules.....	Page 20
El Paso County Horse Premier Exhibitor	Page 21
Horse Show Qualifier Form.....	Page 22
Drug Use Form	Page 23
Patterns	Pages 24 & 25
Emergency Contact Card.....	Page 26

HORSE PROJECT COMMITTEE BOARD MEMBERS

Chair	Kayla Fiocco	plainsmen4hclub@yahoo.com
Vice Chair	Alison Baker	tessa.kc@hotmail.com
Secretary	Randi Hudson	randaleehudson@yahoo.com
Treasurer	Trish Manyik	

HORSE CLUBS

Country Style	Maggie Kenoyer	kenoyers@gmail.com
Trailblazers	Jackie Mead	meadcolospgs@yahoo.com
Plainsmen	Kayla Fiocco	plainsmen4hclub@yahoo.com

CSU EXTENSION EI PASO 4-H STAFF

4-H Program Assistant	TBA		
4-H Livestock Extension Agent	Emily Tobler	Emily.Tobler@colostate.edu	719-520-7685
4-H Extension Agent–FCS/STEM	TBA		

4-H Communication

The El Paso County 4-H Newsletter will be sent monthly via e-mail and will be posted on the website. Be sure to contact the Colorado State University Extension Office if you are not receiving newsletters. The newsletter is also posted on the Colorado State University Extension El Paso County website at <https://elpaso.extension.colostate.edu/4-h-news/>

The El Paso County 4-H Horse Project Committee meetings are held on the 2nd Tuesday of the month, 6:00 PM, at Kit Carson Riding Club. The committee plans programs and provides guidance of the 4-H horse program. Please refer to the monthly 4-H Newsletter, club leader or emails as meeting place and dates may change. Committee meetings are open to all 4-H members, parents, and the public.

4-H Colors

The 4-H colors are green and white.

Green symbolizes nature's most common color and represents life, springtime, growth and youth.

White stands for purity and high ideals.

4-H Pledge

I pledge my head to clearer thinking,

My heart to greater loyalty,

My hands to larger service, and

My health to better living,

For my club, my community, my country and my world.

4-H Motto

To Make the Best Better

The 4-H motto encourages youth to do their best and improve the next time, so their “best” becomes “better.” Members stretch their abilities and capacities to reach their full potential.



4-H Slogan

Learn by Doing



To consider when enrolling in a 4-H Horse Project

- The El Paso County 4-H member must own or be able to lease a horse or mini horse.
- **Primary Care of 4-H Animal Projects** - 4-H members will provide the primary and continuous care of their project animals from project beginning to completion. "Primary" care means there may be rare circumstances when the youth may not be able to provide the necessary care for the animal at a particular time, as in illness, short vacations, etc. On such occasions, another individual may be called upon to provide "secondary" care.
- Members are required to complete the animal care and housing document. (see Colorado State 4-H Policies)
- Members are required to complete safety test before attending events held on horseback.
- Cloverbuds age 4-H youth (4-H age 5-7) are not permitted to show or exhibit any animals.
- Be aware that youth members showing horses have clothing and equipment requirements. Be sure to inquire with your 4-H project leader and refer to your 4-H project manual. All animal exhibitors must complete a Code of Show Ring Ethics.
- **Animal Identification in 4HOnline** - All 4-H project animal information is required to be 4HOnline by May 1st. (see page 6 for more information).



4-H Horse Project Manuals

MA1500F– 4-H Horse Manual	\$10.00
LA1500J – State Horse Show Rulebook (revised 2020)	\$20.00
MA1500G – Beginner's Horse Judging Guide & DVD	\$3.00
MA0000G – A Guide for Successful Horse Judging	\$3.00
LA1500B – Guidelines for Gymkhanas	\$3.00
**MA1517 - Every Time...Every Ride DVD	\$17.00

The Colorado State 4-H Program offers the following resources (publications) which can be ordered from the Colorado State University Extension Office **through your 4-H Club** bulk order:

***The two manuals that are highly recommended to be owned by each 4-H member in the horse project is the 4-H Horse Manual and State Horse Show Rulebook*

4HOnline Horse Project Animal Identification Upload Instructions

All 4-H horse members are required to upload their project animal information in 4HOnline. Please note the deadline dates to enter project information into the system. Please complete the required fields.

- Horse and miniature equine project IDs must be entered into 4HOnline by **May 1st** (current 4-H year by midnight)
- Follow the step-by-step instructions located at this link: https://elpaso.extension.colostate.edu/wp-content/uploads/sites/44/2022/03/EPC-Horse-ID-Instructions_2022.pdf

Horse Project Record Book

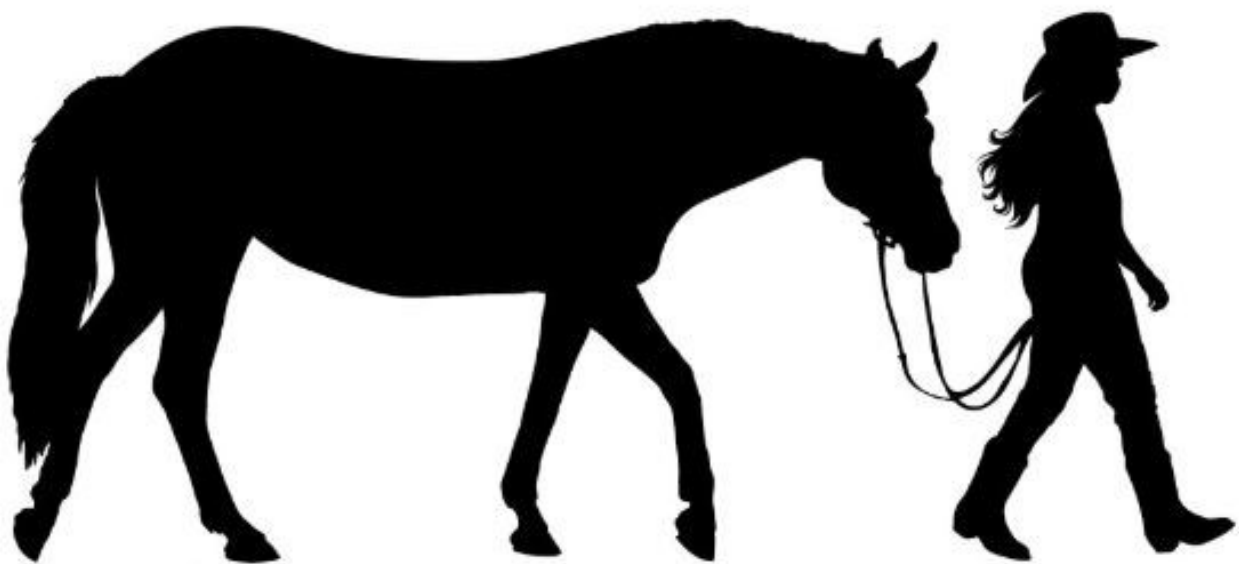
A Record Book is required to earn project completion.

All e-Records, required supplemental pages, and tip sheets are located on the State 4-H Website see Schedule F.

Helpful Tips:

- Miniature Horse and Horse record books will be completed as separate record books as they are different project areas.
- Keep all your records!
- Take photographs throughout the year of your Horse project. You will need a minimum of 4 project-related photographs for your record book. Photographs should show project progress (such as project beginning, middle, and end). Photographs need to be more than fair photographs. Please do not include photographs from school or other non-4-H project activities.
- Track your costs and save ALL receipts (food, vet bills, supplies of any kind).
- Keep a record of dates and costs for all Horse events you attend (classes, shows, community service, etc.).
- Save a food nutrition label from the feed bag, you will need this information for your record book (you can usually print this from the internet if you forget).
- Complete all pages and questions. If a question doesn't apply to you, then indicate "N/A" or follow the directions on the record book page.
- Date things appropriately! (If it was supposed to be signed or filled in at the beginning of the project year then don't date it at the end of the year!)
- Check your math.
- Fill in ALL spaces if you do not know the answer then write "unknown" or if it doesn't apply, write "N/A" or follow the instructions on the record book page, in some cases it is also acceptable to estimate. BUT NEVER LEAVE AN ANSWER BLANK!!! Enter all information in date order.
- **Goal Reflections** - It is important to write goals each year. Goals help you learn more about your project and your life. It is also important to think of how you will accomplish your goals. Goals may be personal, or project related. Answer the questions about each of your projects and goals. Use complete sentences when asked.
- **Health Record** - Enrolling in an animal project requires you to take responsibility for the health of your animal. Record all health care for your animal(s). Health care can be medicine (shots, de-wormer, pills) or management (fly prevention, nail/hoof trimming, shearing, clipping, cleaning pens, feed tubs, and water tanks, etc.) Also include supplements and medicated feeds (check the feed tag). Do not leave any blanks. Record N/A where applicable.
- **Community Service and Fund Raising** - 4-H Members must complete a community service activity and in most clubs a fundraiser in order to complete their project.
- **Leadership** - Record times when there were opportunities for leadership such as being a club officer or committee involvement.

- **Clinics and Shows** - Record additional opportunities for growing with your horse such as: Saddle Club Shows & Clinics, Buckle Series, Clinics, Nutritional Events, 4-H Shows, and Open Shows.
- **Education** - Record all educational opportunities such as: Horse Bowl, Horse Judging, and Hippology.
- **Competitive Trail Rides** - Trail riding is a wonderful way to be active with your horse, especially with the beautiful Colorado scenery. Record your individual trail rides and competitive trail ride involvement. Ride4s may be within our outside of 4-H.
- **Project Pictures** - Include a minimum of four pictures each with a descriptive caption. Include pictures that demonstrate the progress of your project. Additional photos may be added.
- **4-H Story** - Tell us about your 4-H experience in a story. The following may be used as a guide to help you in compose a story related to your project (s).
- **Project Completion:** Be sure and have ALL signatures and dates; Leader can be club leader, Horse project leader, or a project committee member, Do not leave it blank!



OUTLINE OF EL PASO COUNTY 4-H HORSE PROJECT

1. HELMET POLICY

APPROVED (ASTEM/SEI) helmets with harness and hat strap that is fastened are mandatory for all exhibitors while mounted at all times. This includes all 4-H sponsored clinics, practices, shows, and open rides (any 4-H event where a member is mounted). Please see the Colorado 4-H Show Rule Book for the additional requirements and the recommended type of safety helmet. It is the responsibility of the show management to determine whether a helmet is approved per the state rule book requirements.

2. DRESS CODE FOR ALL 4-H ACTIVITIES

At all 4-H activities youth and volunteers are expected to follow the 4-H Dress Code.

The El Paso County Horse Show (County or Club Show) requires all exhibitors to wear proper attire in all horse show classes.

- Proper Western attire includes a long-sleeved shirt (must be tucked in), long pants, and boots with a heel. Helmets are required for all events, except Western/Ranch showmanship.
- Proper English attire is required for all English classes.
- Proper Western attire is required for Western, Ranch, and Gymkhana.

The El Paso County Clinics (County or Club) require all members to wear proper attire.

- Helmets are required anytime the youth are mounted at a 4-H event
- Boots with a heel
- Long pants (pajamas and street leggings will not be allowed)

2. REGISTRATION OF PROJECT HORSE

A. A Project horse is a horse that the 4-H member has:

1. Identified: Members must submit photos and identification information on each project horse and miniature horse in 4HOnline. The **El Paso County deadline for the Horse and Miniature Horse Identification Form is May 1st**. If a horse member plans to show in a 4-H Horse Show prior to May 1st all registration information must be completed prior to entering any 4-H Horse Show. Refer to page 6 for step-by-step instructions.
2. Complete access to at all times.
3. Responsibility for the care and management.
4. Kept complete records for and turned in the record book to their project leader by the required deadline to be announced by the project leader.
5. Every project horse registered with 4HOnline must be included in the record book. Every horse included in the record book must be registered through the 4HOnline by the May 1st deadline or PRIOR to showing in any 4-H horse show whichever date comes first.

B. Changes in Project Horse Designation. Members may change their designated project horse (s) before May 1st of the current year by filling out a new horse identification ID through 4HOnline and notifying the Extension office. **NOTE:** It is best to register all horses you might use that meet the requirements for being a project horse.

3. SAFETY TESTING (HORSES)

1. Safety Testing is required for unrated members and new members moving into El Paso County who wish to participate in approved clinics, events, shows, and county fair in the current 4-H year. Completion is only required once per horse/rider combo.
2. ONLY the practical test will be given accordingly, and the member will not be allowed to be mounted at any HAC approved clinics, events, or shows.
3. Safety Tests are to be tracked and reported by a certified horse project leader (must be a registered volunteer of 3 years in the horse project in El Paso County) and must be filed with the CSU Extension Office.
4. If youth transfer from out of county they are still expected to take the safety testing.

4. SAFETY & MASTERY TESTING (MINIATURE HORSES)

1. Safety Testing is mandatory for members enrolled in the Miniature Equine Project. Mini Equine members will be required to complete the safety test along with obtaining an official measurement. This must be done before participating in any HAC approved clinics, events, shows, and county fair. .
2. If youth transfer from out of county they are still expected to take the safety testing.
3. Safety and Mastery Tests are to be tracked and reported by the lead Mini Equine Project Leader and must be filed with the CSU Extension Office.
4. The progression of testing will be outlined as follows.
 - Safety Test 1: Basic Safety
 - * This must be completed for any new members or transferring members who wish to participate in approved clinics, events, shows, and county fair (that do NOT include ground driving or driving).
 - Mastery Test 1: In-Hand Mastery
 - * This must be completed before the youth are allowed to participate in any HAC approved ground driving clinics.
 - Mastery Test 2: Ground Driving Mastery
 - * This must be completed before the youth are allowed to participate in any ground driving classes at a 4-H sponsored shows and county fair
 - Mastery Test 3: Driving
 - * This must be completed before the youth are allowed to participate in any driving classes at a 4-H sponsored shows and county fair. There will be a written and practical test for driving.

5. BEGINNER, NOVICE, NEW TO YOU, AND LEVELED GROUPS

A. Beginner

1. Beginner classes are for unrated riders only.
2. Beginner is a WALK/TROT division. Exhibitors in beginner classes may not lope, canter, or gallop.
3. Exhibitors riding beginner cannot compete in another level at the same show.
4. A beginner may not change categories during a show.
5. Specific beginner riding control pattern will be used. (See Attachment D/E)
6. A beginner may move up to their age group or the Novice division once they have shown in an age group class or Novice, BUT they may NOT move back down to beginner.
7. If a beginner moves to novice during the show season, they may show novice the following year if they desire. The year they began as a beginner does not count against their novice year.
8. If exhibitors in these levels show in a shank bit in Western and Ranch, then they must ride one handed. Regardless of the horse's age, a snaffle can be used as long they show two-handed and hold the reins according to the Colorado State 4-H Horse Show Rule Book, and have proper equipment in the Beginner classes.

B. Novice

1. Definition of a Novice Rider: A rider who has little showing experience, most likely in their first years of riding. Can ride a horse at a walk, trot (jog), and has begun loping (cantering). May or may not understand leads.
2. Novice Classes are for unrated riders only.
3. Novice riders will be encouraged to move to Level One after their first year.
4. Exhibitors riding Novice division cannot compete in another category/age group at the same show for points. However, the Exhibitor may show at the beginner level in another category for no points, and for exhibition only, at the direction of show management.
5. Novice riders may not change to their age group in a division during a show.
6. Classes offered for levels groupings in English and Western divisions may also be offered in the Novice division.
7. If exhibitors in these levels show in a shank bit in Western and Ranch, then they must ride one handed. Regardless of the horse's age, a snaffle can be used as long they show two-handed and hold the reins according to the Colorado State 4-H Horse Show Rule Book, and have proper equipment in the Novice classes.

3. New To You

1. If exhibitors in these levels show in a shank bit in Western and Ranch, then they must ride one handed. Regardless of the horse's age, a snaffle can be used as long they show two-handed and hold the reins according to the Colorado State 4-H Horse Show Rule Book, and have proper equipment in the New To You classes.

2. The New To You Division is created for Level 1 or higher riders that have a new mount where the pair has not shown together prior to the current 4-H year in any equine competition.
3. The age and training of the new mount is not taken into consideration for this class.
4. If the new rider and horse combo show in this division, they are not eligible to show in any other division at County Fair with the same horse.
5. If the new rider and horse combo show in this division, they are not eligible to show at State Fair.
6. The new horse and rider combo are only eligible for this division for two years.
7. The patterns for this division used will not exceed Novice level patterns.

D. Levels

1. We will follow the state 4-H Horse Project Member manual.
2. We encourage all members to ride at the Level best suited for the member and their horse. We encourage working through the Levels, using goal setting to assist in riding development and in setting challenges for the member.
3. Participants in Competitive Trail Ride mounted clinics and CTR competitions must be rated Level 1 or higher.
4. Levels are to be tracked and reported by members, his/her horse project leader and must be filed with the CSU Extension Office in El Paso County.
5. Exhibitors entering classes in English, Ranch, or Western events must hold the applicable Level Certification by **June 1**.
6. If youth in the Level II or higher transfer from a different county they will be expected to re-take the riding portion of the test.

5. COUNTY FAIR PARTICIPATION

- A. Horse project members must have shown each project horse they wish to qualify for County Fair in a riding class (miniature equine should be entered in at least one in-hand class) that is a HAC sanctioned show. In addition, the rider/exhibitor must show in showmanship, and taken the written test at one Horse Advisory Committee sanctioned 4-H horse show during the current 4-H project year.
 - To meet the riding class requirement another option is to complete the Open show Qualifier Form before County Fair. (Form included in Horse Project Book and available on the County website). Please note this option, does not apply to first year 4-H members.
- B. Points accumulate on One Horse/One Rider combination.
- C. Exhibitors at County Fair must compete at the level passed as of June 1, regardless of the level at time of entry.
- D. The County Fair Horse Show, held over 2 days is considered 1 show.
- E. The exhibitor must participate in both written test and showmanship if the classes are offered

on any day of participation at the County Fair to qualify for overall awards.

- F. Miniature Equine Shows utilize AMHR rules as guidelines.
- G. Competitive Trail Rides follow Colorado 4-H Competitive Trail Riding Rules and Regulations.
- H. Master Showman selections will be filled with the Champion of Champions of each Age Group. Champion of Champions qualifications are an Addendum to the El Paso County Fair 4-H Horse Exhibit Premium. Miniature equine participants are the first, second, and third place exhibitor/horse combination for each age group.
- I. For cattle classes, an exhibitor is responsible for a \$45 cattle fee or market value fee of the current year set by CSU Extension. Exhibitors must also receive a qualifying score from a cattle clinic held in El Paso County by the 4-H Horse Advisory Committee before becoming eligible for cattle classes at county fair.
- J. For Hunter Hack, exhibitors must also receive a qualifying score from a hunter hack clinic held in El Paso County by the 4-H Horse Advisory Committee before becoming eligible for hunter hack classes at county fair.

For more fair information please refer to the 4-H Horse Premium Book on the El Paso County 4-H CSU Extension webpage.

6. STATE FAIR

- A. See State Rule Book and State Fair Premium for details.
- B. Exhibitors must show at the County Fair 4-H Horse show in order to participate in the State Fair 4-H Horse Show. Waivers of this requirement will be considered by the extension agent should extenuating circumstances arise that prevents an exhibitor from showing at the County Fair.
- C. Exhibitors should only sign up for classes in which they are eligible to show in.
- D. You must be a Level 2 or higher to show at the State Fair Horse Show, or based on the current eligibility standards set forth by state fair.
- D. Horse/Rider combination that competed in New To You of the current year are not eligible.

7. HORSE SHOWS HOSTED BY CLUBS OR PROJECT LEADERS

- A. Shows will be conducted in accordance with the Colorado 4-H Horse Rule Book or El Paso County Miniature Horse Rulebook with the following exceptions or additions:
 - 1. An event form must be on file with CSU Extension.
 - 2. Approved ASTM/SEI helmet with harness and hat strap that is fastened is mandatory for all exhibitors while mounted.
 - 3. In classes with rail work, safety is the number one priority. If the number of exhibitors in the class could potentially pose safety issues, based on the size of the arena or experience of exhibitors, show management should consult with the judge and either split the class or require pattern work with cuts made.
 - 4. Only 1 entry per exhibitor per class, points accumulated on one horse one rider

combination towards Overall and Reserve awards. Each horse/rider combination is eligible for Overall, Reserve Over-all and Division awards. You must complete in the written test and 2 other classes to be considered as competing in a division to qualify for Overall awards.

5. The written test is a required class of all exhibitors at all 4-H County Shows including miniature, working ranch horse, and Competitive Trail Ride. If not taken, contestant will not be eligible for show awards or points.
 6. Miniature Horse Shows utilized AMHR rules as guidelines.
 7. Competitive Trail Rides follow Colorado 4-H Competitive Trail Riding Rules and Regulation.
 8. Members should post Emergency Contact Information on their horse trailer to include: member's name, parent's name, horse's name and emergency contact phone numbers. This should be posted on the trailer at all 4-H Shows, competitions, clinics, open rides, practices, etc. (See Attachment F)
- B. There will be an adult 4-H HAC member assigned to each show and Competitive Trail Ride. The HAC member and the show manager, with consultation will ensure that the show is conducted in compliance with these rules and regulations, according to the highest standards of horse show safety and ethics.
- C. The youth should be the primary care provider for the project animal to their ability. The member should prepare his/her project animal when it is being exhibited at a County/4-H show. If assistance is needed, it may be provided by another 4-H member, a parent or 4-H leader. If assistance is provided the 4-H member enrolled in the project must be present and working/ participating in the 4-H activity.
- D. Adults including professional trainers, parents, and volunteers will not coach from the rail, please understand that coaching is different than giving encouragement. The youth is expected to be the sole equine handler when it comes to riding, lunging, driving or warming up a project horse in any way at any 4-H horse show. However, if the safety of the youth and horse is a concern the parent may approach show management for approval to support and help the youth. Please note that the show management holds the final decision. If a person is seen not abiding by this rule they will first be notified by either the show management or the HAC representative at the show that the practice is not permitted. If the practice continues or occurs again the show management has the right to ask the individual (s) to leave the grounds.
- E. Unruly horses will be dismissed from 4-H classes, clinics and/or shows if deemed a distraction or safety risk to other exhibitors by the show manager or HAC representative.
- F. Special needs exceptions or requests for compensatory aids and adaptive equipment will be made available at all county 4-H shows if requested upon show registration. Special circumstances such as two-hands, adaptive equipment, side-walker, helper, ect. Can be made within reason for those entering that class. Any special needs for a rider will be identified prior to the class. It is at show managements discretion concerning accommodations and special circumstances.
- G. Adherence to the 4-H dress code at all 4-H shows, 4-H clinics, 4-H meetings and 4-H events is required even when members are not in the show ring. Dress Code Policy is found on the State and El Paso County websites.

- H. A published show bill, pre-approved by HAC, will indicate by name the person appointed show manager by the sponsoring club. The show manager is responsible for the proper and safe conduct of the show and for adherence to show rules. Shows not following rules will result in show NOT being a HAC sanctioned show or will be in violation of hosting other 4-H events. EPC Extension will be at discretion concerning these matters.
- I. Violation of these rules will result in the 4-H member forfeiting all show points and entry fees for the current show (including County Fair).
 - 1. First violation – verbal warning.
 - 2. Second violation – Written Warning.
 - 3. Third Violation – Dismissal from the show.
- J. Classes offered will align with the Colorado 4-H State Horse Show Rule Book
- K. Eligibility – Exhibitors at 4-H horse shows in El Paso County must be:
 - 1. Members in good standing of the 4-H program.
 - 2. By December 31st of the current year be at least 8 years of age and not reached their 19th birthday.
 - 3. Junior members are 8-10, Intermediate 11-13, and Seniors 14-18.
- L. Entry fees and Office Charges
 - 1. Show management may determine entry fees per class or charge a day rate.
 - 2. Office charge per horse may apply.
 - 3. Show management will determine stock charges.
 - 4. Bad Checks – If a check is returned for insufficient funds show management may pursue collecting funds per the El Paso County Extension office policy for bad checks.
- M. Awards must be offered.
- N. The class awards for the written test will be determined by show management.
- O. The choice of premiums, prizes or awards (ribbons, buckles, trophies, etc.) to be presented is at the discretion of show management.
- P. Tie breakers will be determined as follows: The score for the written test and/or placing in the showmanship class.
- Q. Open Shows:
 - 1. Must purchase additional insurance for the event to cover open exhibitors. Please reach out to CSU Extension on how to purchase additional insurance. Fees must be covered by host of the event.
 - 2. Open show exhibitors must be 8 years and older.
 - 3. Open exhibitors must sign a required waiver. Please reach out to CSU Extension on how to obtain a waiver.

4. 18 and under participants must wear a helmet.
5. Proper English and Western attire is required by all exhibitors as outlined in the 4-H Colorado Show Rulebook.
6. Required equipment will also align with the 4-H Colorado Horse Show Rulebook.
7. Open shows should be marketed in at three different forms (i.e. local stores, social media, extension agent outreach, etc.)
8. Following the conclusion of the open show, the club or HAC must report participant names, copy of insurance, copy of waivers, and marketing summary.

8. HORSE CLINICS

- A. An event form must be on file with CSU Extension.
- B. An event form, pre-approved by HAC, must be completed according to CSU Extension guidelines. Clinics not following the rules 4-H horse project rules will result in the clinic NOT being a HAC sanctioned clinic, and will be in violation of hosting other 4-H events. Discretion is left to CSU Extension.
- C. Clinics must be published in the 4-H Newsletter to make the opportunity equitable to all members in the county.
- D. An adult clinician with an overview of professional qualifications should be used.
- E. Clinic must be open to all 4-H horse project members.
- F. Clinic will be non-breed endorsement.
- G. Request for HAC approved clinics should be presented at least 2 weeks prior to proposed clinic date at a scheduled HAC meeting.
- H. Following the conclusion of the clinic, the club or HAC must report complete list participant names, copy of insurance (if applicable), copy of waivers (if applicable), and marketing summary.

8. EQUINE DRUG USE

- A. Random drug testing can be administered at any county 4-H horse show or Competitive Trail Ride. HAC will cover the cost of the initial testing.
 1. Positive indicators of illegal drugs or failure to submit horse for testing will result in forfeiture of show awards and indefinite removal from the 4-H horse project. In such case, reinstatement must be approved by HAC.
 2. Any costs to cover retesting to appeal an initial drug test failure will be the responsibility of the 4-H participant and their family.
 3. Refer to the Colorado 4-H Horse Show Rule book for more details.
 4. 4-H horse show contestants must notify show management, HAC, and Fair Veterinarian at the time of check in if any horse being shown has been administered any commercially available or veterinarian prescribed drug that could alter the performance of the horse and/or result in a positive drug test indication. (See Attachment C)

10. MINIATURE HORSE

Members who wish to participate in Driving at the 4-H County Fair Horse show must have taken and passed at least one written and practical test for Driving during the current 4-H project year before submitting their entry for County Fair.

11. ACCIDENT INSURANCE

Accident insurance is carried on all 4-H horse members and leaders once enrollment forms have been submitted to the Extension office. Claim forms and additional information are available in the 4-H office. No participation in 4-H mounted activities are permitted until enrollment forms are accepted by the El Paso County 4-H Extension Office.

12. RELEASE OF LIABILITY

All exhibitors who enter a 4-H sponsored horse show entirely at their own risk and parents/guardians must agree to this as a condition of entry. Therefore, each county show must contain a waiver on or with their entry form.

13. SPORTSMANSHIP AND CONDUCT

Will be in accordance with the State 4-H rules, guidelines, 4-H Horse Show Rule book and El Paso County 4-H Code of Show Ring Ethics and Show Premiums.

14. HORSE JUDGING, HORSE BOWL, HIPPOLOGY, DEMONSTRATION CONTEST AND PUBLIC SPEAKING

See State 4-H guidelines (<http://co4h.colostate.edu/program-areas/horse-resources/horse-rule-book/>), leader, or Colorado State University Extension Office for more details. These are 4-H activities for any enrolled 4-H member. They do not have to be enrolled in the horse/mini horse project to participate. These activities for competition are divided into Junior (8-13) and Senior (14-18). Requests for funds may be made by participants (individuals or team) for expenses for competition at the State or National level.

- A. **Horse Judging**: Program to teach youth life skills through the art of judging a horse based on the breed standards, the ideal confirmation characteristics, and performance criteria. It is open to both junior (8-13) and senior (14-18) 4-H members.
- B. **Horse Bowl**: Based on your knowledge in the field of equine science. Junior and Senior team. The team (s) will take part in various county contests, as they are available. Senior teams will be selected to represent El Paso County at the state contest in June based on the following criteria: 1) participation in practice sessions; 2) participation in county contests; 3) knowledge and ability to play the game; 4) teamwork and cooperation with coaches and other team members.
- C. **Hippology**: 4-Hers demonstrate their knowledge and understanding of the equine science and management and, the practical application of this knowledge. The contest has four separate parts: a written exam, station identification, horse judging, and a team problem. There can be a junior and senior team but only the senior team will represent the El Paso County at the state contest at CSU in June. The state team (s) will be based on the following criteria: 1) participation in practice; 2) knowledge and ability; 3) participation in county contests; 4) teamwork and cooperation with coaches and other team members.

- D. **Demonstration Contest:** All 4- H members are encouraged to participate in the County Demonstration Contest. There are individual and team competition for both juniors and seniors. Rules for the competition can be found in the Colorado 4-H Horse Rule book with the following exceptions: Juniors may compete in the County contest. Junior demonstrations need to be a minimum of 10 minutes long and a maximum of 15 minutes. The County winner is the senior division will compete in the state contest CSU in June. If the senior division winner is unable to attend the state contest, then 2nd place winner may attend.
- E. **Public Speaking:** All 4-h members are encouraged to enter the county's Speech Contest. Check with your 4-H leader or Extension Office for date. Rules for competition can be found in the Colorado 4-H Rule book with the following exceptions: Juniors may compete in the county contest. Juniors' speeches must be a minimum of 3 minutes and a maximum of 6 minutes. Seniors are a minimum of 7 minutes and a maximum of 10 minutes. The County winner in the senior division will compete in the state contest at CSU in June. If the senior division winner is unable to attend the state contest, then the 2nd place winner may attend.

16. COMPETITIVE TRAIL RIDE

- A. Categories – Age Levels
- B. Pre-approved North Trail Ride Conference (NATRC) Region III Novice A or B CTRs will be recognized as 4-H competitive trail ride competitions until such time as 3 CTRs are sponsored by
- C. As a statewide project, 4-H CTR competitions will receive points for participating in the 4-H CTRs in other parts of the state.
- D. To calculate the Trail high point awards: Reference Schedule C on page 20.
- E. Competitive Trail Conditioning Log Link: Reference Schedule C on page 20.

17. FREESTYLE REINING

Requirements:

- A. Maximum of 4 minutes in length.
- B. Music, in the form of a CD, labeled with your name, your pattern drawn and written instructions to the office by noon of the class day.
- C. Must meet 4-H safety, tack, attire, and equipment requirements.
- D. Can ride any age horse one or two handed with any 4-H approved bit.
- E. Performance must include at least:
 - 1. 1 sliding stop
 - 2. 1 back of at least 20 feet
 - 3. 1 slow small circle in each direction
 - 4. 1 large fast circle in each direction
 - 5. 1 rollback in each direction
 - 6. 1 lead change in each direction
 - 7. 2 spins in each direction

SCHEDULES/FORMS/ATTACHMENTS

Schedule A – State Level Guidelines

<https://co4h.colostate.edu/program-areas/horse-resources/levels-testing/>

Additional State resources:

<https://elpaso.extension.colostate.edu/wp-content/uploads/sites/44/2017/04/HorseProject.pdf>

Schedule B – Miniature Horse

<https://drive.google.com/file/d/0Bz4ZT7uVZIIHcnZpaVRKcGJaQ2U2ZkRnMDFnY1NjN2xoR2ZZ/view?usp=sharing>

Schedule C - Competitive Trail Rides

<http://co4h.colostate.edu/resources/horse/CTR-RideRulesAndRegulations.pdf>

4-H Competitive Trail Riding Conditioning Log

<https://elpaso.extension.colostate.edu/wp-content/uploads/sites/44/2017/04/Horse-Competitive-Trail-Conditioning-Record.pdf>

Colorado 4-H Competitive Trail Riding Facebook Page

<https://www.facebook.com/Colorado-4-H-Competitive-Trail-Riding-103123723090819/>

Schedule D - Equine Drug Use

<https://www.usef.org>

Schedule F— Horse Project Record Book

<http://co4h.colostate.edu/program-areas/animals/>

El Paso County Premier Horse Exhibitor

See Attachment A

El Paso County Horse Show Qualifier Form

See Attachment B

El Paso County Horse Drug Usage Form

See Attachment C

Beginner riding control pattern

See Attachment D and E

Novice riding control pattern

See Attachment D and E

Emergency Contact Information

See Attachment F

Attachment A

Premier Horse Exhibitor

All exhibitors are encouraged to enter! All entries should be made in FairEntry as this is a county fair contest. This award will be given to the outstanding 4-H member (ages 8-18) in each age division: junior, intermediate, and senior. The focus of this award is on rewarding excellence in comprehensive areas such as equine science components (written test), life skills (interview), range of disciplines (divisional points), and record keeping (record books). Contestants will be evaluated on five areas:

- a) Divisional Points (English, Western, Ranch, and Gymkhana)
- b) Record book (including detailed health and nutrition records)
- c) Showmanship
- d) Knowledge based test
- e) Interview Youth

The Premier Exhibitor Award will be based on the following criteria and scoring system:

Divisional Points (0-20 points)- 5 points to enter each division which includes English, Western, Ranch, and Gymkhana

- Entering showmanship does not meet the requirement for competing in a division

Record Book (0-25 points) –points must achieve a Blue award to be eligible.

- 100=25 points,
- 99=24 points
- 98 points=23 points
- etc.

Showmanship (0-25 points) –

- 1st place = 25 points
- 2nd = 23 points
- 3rd = 21 points

Knowledge Test (0-25 points) –Score will reflect the points scored on the test i.e. 23 questions correct will earn 23 points. Test will be given at County Fair.

Interview (0-25 points)- Sign up for interview times with the Extension Agent prior to the County Fair Horse Show

An exhibitor will forfeit their eligibility for the Premier Exhibitor Award if it is deemed by Rules Committee that a member exhibited poor sportsmanship or engaged in unethical behavior during the County Fair Horse Show.

Attachment AA

Premier Miniature Horse Exhibitor

All exhibitors are encouraged to enter! All entries should be made in FairEntry as this a county fair contest. This award will be given to the outstanding 4-H member (ages 8-18) in each age division: junior, intermediate, and senior. The focus of this award is on rewarding excellence in comprehensive areas such as equine science components (written test), life skills (interview), range of disciplines (divisional points), and record keeping (record books). Contestants will be evaluated on five areas:

- a) Divisional Points (In-Hand, Gymkhana, Ground Driving, Specialty (Liberty and Costume), and Driving)
- b) Record book (including detailed health and nutrition records)
- c) Showmanship
- d) Knowledge based test
- e) Interview Youth

The Premier Exhibitor Award will be based on the following criteria and scoring system:

Divisional Points (0-25 points)- 5 points to enter each division which includes In-Hand, Gymkhana, Ground Driving, Specialty (Costume and Liberty), and Driving. Entering showmanship does not meet the requirement for competing in a division

Record Book (0-25 points) –points must achieve a Blue award to be eligible.

- 100=25 points,
- 99=24 points
- 98 points=23 points
- etc.

Showmanship (0-25 points) –

- 1st place = 25 points
- 2nd = 23 points
- 3rd = 21 points

Knowledge Test (0-25 points) –Score will reflect the points scored on the test i.e. 23 questions correct will earn 23 points. Test will be given at County Fair.

Interview (0-25 points)- Sign up for interview times with the Extension Agent prior to the County Fair Horse Show

An exhibitor will forfeit their eligibility for the Premier Exhibitor Award if it is deemed by Rules Committee that a member exhibited poor sportsmanship or engaged in unethical behavior during the County Fair Horse Show.

Attachment B

HORSE SHOW QUALIFIER FORM

El Paso County 4-H Horse Show form confirms a 4-H member participated in an Open Horse Show in El Paso County or one 4-H Show in a neighboring County. This show will count as qualifiers for El Paso County 4-H Horse Project Members to participate in the El Paso County Fair 4-H Horse Show. Show Management will sign off of the form verifying the member showed the indicated horse at the show. Member must participate in a minimum of one class and take the written test.

Contestant _____ Horse Shown _____

Show Date _____ Type of Show (open/4-H) _____

Show Management Signature _____

Show Management Printed name: _____

Show Management Phone Number: _____

If you are using one of the above shows to qualify for the El Paso County Fair 4-H Horse Show, you must attach a copy of your Registration Forms. The original will be turned in with your All Around Achievement Awards forms.

HAC Approved: _____ Date: _____

Attachment C

DRUG USE FORM

(Form for Animals Attending 4-H Shows in El Paso County)

PRINT CLEARLY

EXHIBITOR/OWNER NAME: _____

EXHIBITOR/OWNER ADDRESS: _____

EXHIBITOR PHONE: _____

Animal Name: _____ Animal Species: _____

Animal Description (Breed, Sex, Color, etc.): _____

_____ (initial) I CERTIFY THAT THE ABOVE ANIMAL HAS BEEN MEDICATED, AND THE DRUGS USED FOR WHICH THE WITHDRAWAL PERIOD HAS NOT YET ELAPSED IS LISTED BELOW:

Treatment Date	Condition being treated	Medication Given (Name)	Amount (Dose)	Route	Instructed Withdrawal	Date Withdrawal Complete

IF THIS IS AN EXTRA-LABEL OR Rx DRUG, LIST THE LICENSED VETERINARIAN'S NAME AND ADDRESS WHO PRESCRIBED OR DIRECTED THE TREATMENT:

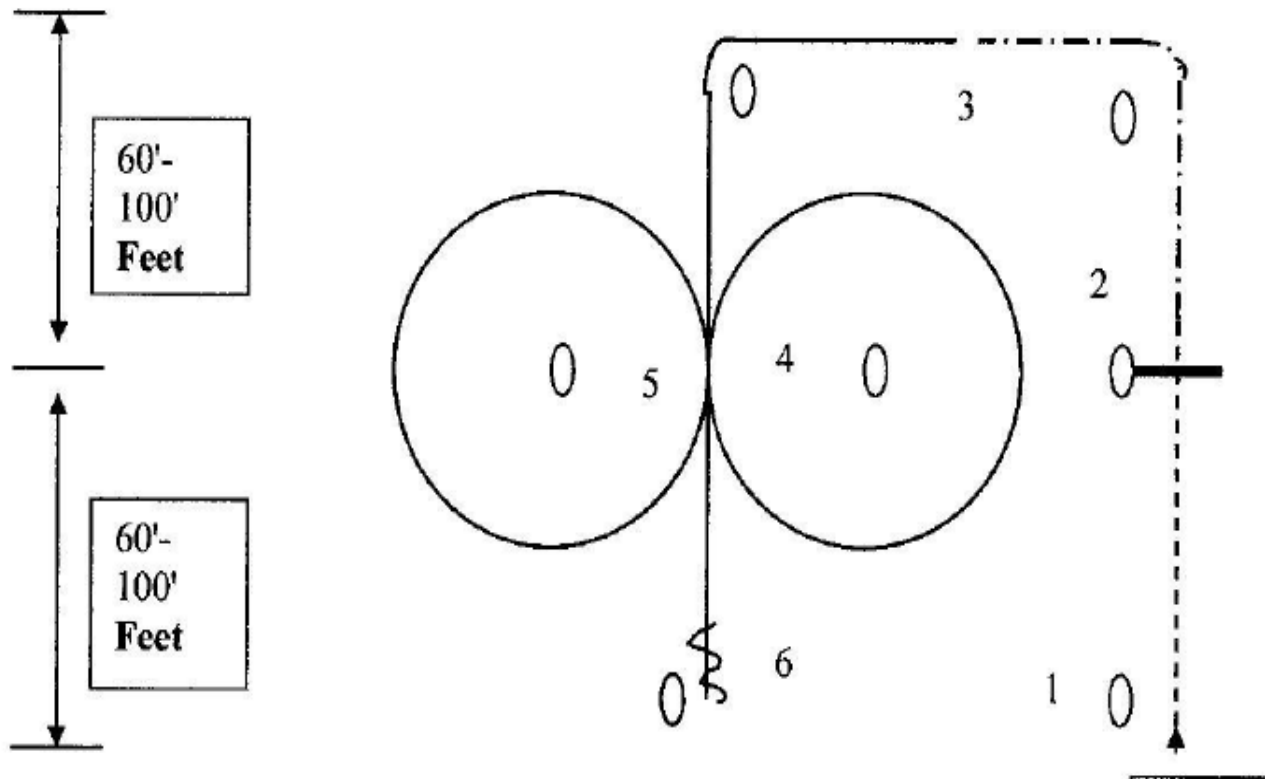
Veterinarian Name Street, or P.O. Box Number City, State Zip

EXHIBITOR/OWNER SIGNATURE: _____ AGE: _____ DATE: _____

PARENT/GUARDIAN SIGNATURE (If above is under 18 years of age) _____ DATE: _____

Attachment D

Riding Pattern for Beginner & Novice Riders English and Western



Marker/cone- 0

Log- —

Walk- - - - -

Jog/Rising Trot - . - . - .

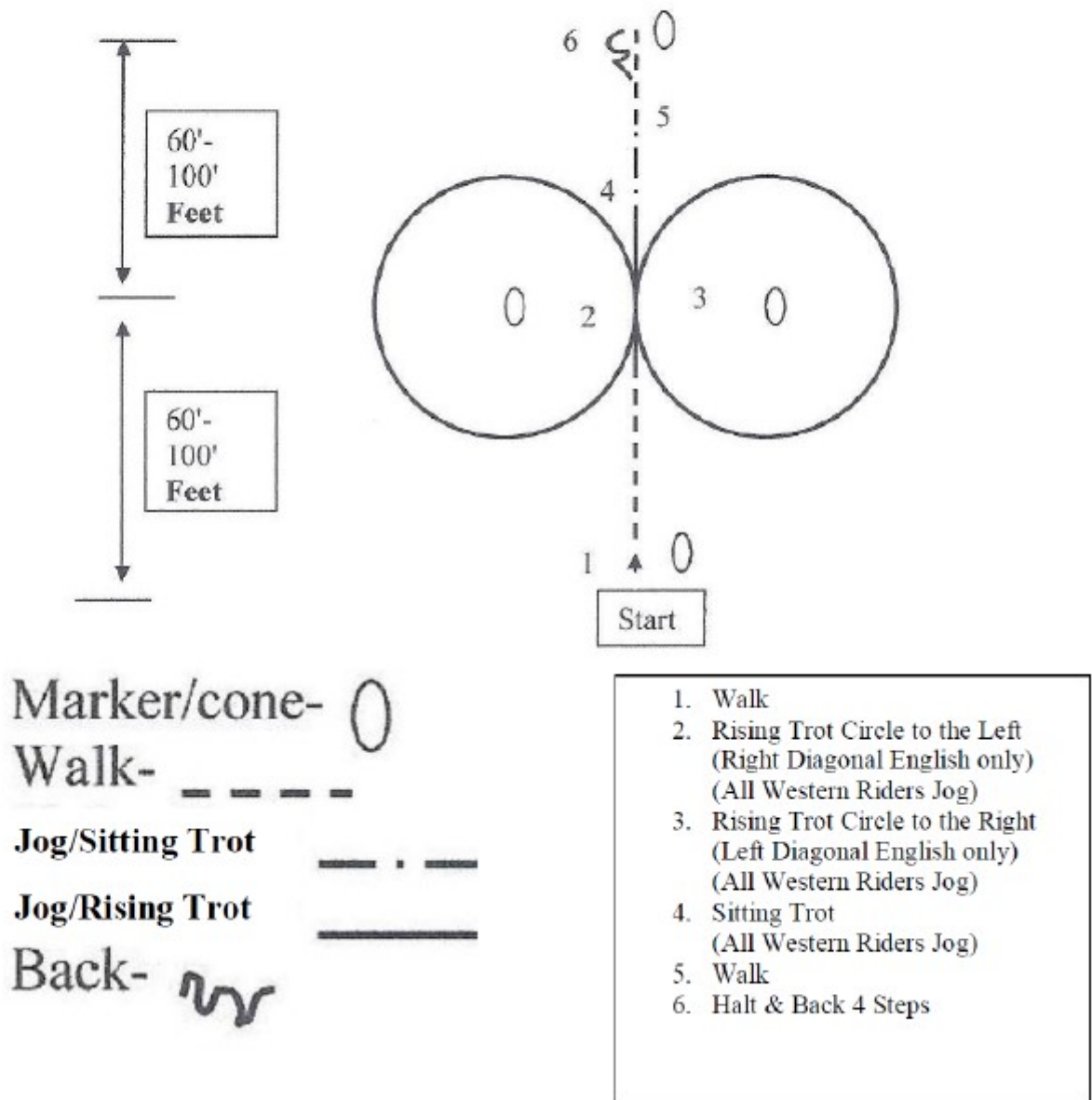
Lope- ———

Back- ~~~~~

1. Walk over log
2. Jog/Rising Trot
3. Lope- Left Lead
4. Lope Large Circle to the left
5. Simple Lead Change- Lope Large Circle to the Right
6. Balanced Stop & Back 4 Steps

Attachment E

Riding Control Patterns for Novice and Beginners English & Western



Attachment F

Emergency Contact Information (post on horse trailer)

Member's Name: _____

Parent's Name: _____

Horse(s) Name: _____

Horse(s) Description: _____

Emergency Contact Phone Numbers: _____

ADULT VOLUNTEERS NEEDED

Definition of Volunteerism

The Act or practice of doing volunteer work in a community service.

Help us with events:

- Workshops
- Practices
- Horse Shows
- Concessions Fundraisers

We need leaders!

- Assistant Superintendents
- Event Organizers
- Project Leaders
- Be sure to share your other skills!

**If you are interested in becoming a 4-H volunteer,
go to the El Paso County website please reach out to Emily Green and
email her at Emily.Green@colostate.edu**

Colorado State University Extension in El Paso County

17 North Spruce Street
Colorado Springs, CO 80905
Phone: 719-520-7698
<http://elpasoco.colostate.edu>

Office Hours: Monday—Friday, 8:00 AM to 12:00 PM and 1:00 to 5:00 PM. *12:00 to 1:00 PM by appointment only.*

Colorado State University, U.S. Department of Agriculture and El Paso County cooperating.

Extension programs are available to all without discrimination. If you have a disability for which you seek an accommodation, please notify the Colorado State University Extension El Paso County 4-H Office ten days prior to the event.
