



May | 2024



Colorado State University Extension is an equal opportunity provider: <https://col/st/OWMJA>
Colorado State University does not discriminate on the basis of disability and is committed to providing reasonable accommodations. <https://col/st/OWMJA>
CSU's Office of Engagement and Extension ensures meaningful access and equal opportunities to participate to individuals whose first language is not English. <https://col/st/OWMJA>

Colorado State University Extension es un proveedor que ofrece igualdad de oportunidades. <https://col/st/OWMJA>
Colorado State University no discrimina por motivos de discapacidad y se compromete a proporcionar adaptaciones razonables. <https://col/st/OWMJA>
Office of Engagement and Extension de CSU garantiza acceso significativo e igualdad de oportunidades para participar a las personas quienes su primer idioma no es el inglés. <https://col/st/OWMJA>

| Articles “4” All | |
|--|----------------------|
| Policy on Branding | P. 4 |
| Band App | P. 5 |
| Band App | P. 6 |
| What is a 4-H Community Service | P. 7 |
| What is a 4-H Community Service Cont’d | P. 8 |
| Accommodations Form | P. 9 |
| What is Premier Exhibitor? | P.10 |
| Health Certification Requirement | P.11 |
| Affordable Health Certification | P.12 |
| Oso the Bear | P.13 |
| 4-H Social Media | P.14 |
| County Fair Registration Deadlines | P.15 |
| County Fair Camping | P.16 |
| Fair Cleanup & Livestock Exhibitor Meeting | P.17 |
| 4-H County Fair Pass Pickup | P.18 |
| 4-H Project Talks | P.19 |
| 4-H Youth Camp Counselors Needed | P.20 |
| 4-H State Conference Registration | P.21 |
| 4-H State Conference Cont’d | P.22 |
| Wizarding World Retreat | P.23 |
| Youth Fest 2024– Rising to Olympus | P.24 |
| County Contest State Qualifiers | P.25 |
| County Contest Champions ,Reserve Champions | P.26 |
| Youth County Council Silent Auction Fundraiser | P.27 |
| Youth County Council Panda Express Fundraiser | P.28 |
| Pop Tab Winners | P.29 |
| Cam’s Ag Academy | P.30 |

| Horse & Miniature Equine | |
|-------------------------------------|----------------------|
| Horse—Looking Forward | P.31 |
| Horse—Looking Forward | P.32 |
| Horse Judging | P.33 |
| Miniature Equine—Looking Forward | P.34 |
| Miniature Horse Show | P.35 |

| Livestock | |
|--|----------------------|
| Market Goat and Sheep Tag In | P.36 |
| Market Goat and Sheep Tag In Cont’d | P.37 |
| Market Swine Tag Pick Up | P.38 |
| Out of County Form for Showing Livestock | P.39 |
| Sheep Clinics | P.40 |
| Rendezvous on the Range | P.41 |
| Beef Rate of Gain Contest | P.42 |

| Shooting Sports | |
|------------------------------|----------------------|
| Practices | P.43 |
| Shooting Sports Tattoo Party | P.44 |

| Dog | |
|------------|----------------------|
| Dog Show | P.45 |

Colorado State University Extension is an equal opportunity provider: <https://col/st/OWMJA>

Colorado State University does not discriminate on the basis of disability and is committed to providing reasonable accommodations. <https://col/st/OWMJA>
 CSU’s Office of Engagement and Extension ensures meaningful access and equal opportunities to participate to individuals whose first language is not English. <https://col/st/OWMJA>

Colorado State University Extension es un proveedor que ofrece igualdad de oportunidades. <https://col/st/OWMJA>

Colorado State University no discrimina por motivos de discapacidad y se compromete a proporcionar adaptaciones razonables. <https://col/st/OWMJA>
 Office of Engagement and Extension de CSU garantiza acceso significativo e igualdad de oportunidades para participar a las personas quienes su primer idioma no es el inglés. <https://col/st/OWMJA>

Table of Contents Cont'd

| <u>Small Animal</u> | |
|--------------------------------|----------------------|
| Cat Project Meeting | P.46 |
| Camelid Pack Demonstration | P.47 |
| Camelid Game Night | P.48 |
| Camelid Fundraiser | P.49 |
| Camelid Showmanship and Photos | P.50 |

| <u>General Projects</u> | |
|------------------------------------|----------------------|
| Tabletop Exhibits & Contests Guide | P.51 |
| 4-H Fashion Revue | P.52 |
| 4-H Fashion Revue | P.53 |

| <u>Youth County Council</u> | |
|------------------------------------|----------------------|
| Recap & Meeting Date and Time | P.54 |

| <u>Other Opportunities</u> | |
|---|----------------------|
| 4-H Garage Sale | P.55 |
| Colorado Springs Get Outdoors Day | P.56 |
| Loma Outlaws Livestock Jackpot | P.57 |
| Weld County Shooting Sports Invitationals | P.58 |
| Fremont County Dog Shows | P.59 |
| Arapahoe County Spring Dog Show | P.60 |
| Paws and Claws Dog Show | P.61 |
| Douglas County Horse Camp | P.62 |
| Douglas County Horse Camp | P.63 |
| Douglas County Livestock Show | P.64 |
| Hippology Contest | P.65 |
| Arapahoe County Red Carpet Show | P.66 |
| Pueblo County 2 Day Show | P.67 |

Colorado State University Extension is an equal opportunity provider: <https://col/st/OWMJA>

Colorado State University does not discriminate on the basis of disability and is committed to providing reasonable accommodations. <https://col/st/OWMJA>

CSU's Office of Engagement and Extension ensures meaningful access and equal opportunities to participate to individuals whose first language is not English. <https://col/st/OWMJA>

Colorado State University Extension es un proveedor que ofrece igualdad de oportunidades. <https://col/st/OWMJA>

Colorado State University no discrimina por motivos de discapacidad y se compromete a proporcionar adaptaciones razonables. <https://col/st/OWMJA>

Office of Engagement and Extension de CSU garantiza acceso significativo e igualdad de oportunidades para participar a las personas quienes su primer idioma no es el inglés. <https://col/st/OWMJA>

Policy on Branding for Clubs, Project Groups, and Committees

This is a friendly reminder that any branding (IE clothing, awards, logos) for committees, clubs or project groups should be sent to the extension office for approval. It is important that we are following the branding guidelines of 4-H and Colorado State University, so we are in compliance with organization standards as well as proper representation.

Common mistakes in branding are not putting a dash in "4-H", using the correct 4-H Logo, etc. If you have any questions, please do not hesitate to reach out to Emily.Green@colostate.edu



Band APP Communications- Shooting Sports and Tabletop

To help with delivering clear communications, provide an updated event calendar, and send out reminders of county wide programming; I have created an app for two project areas which include Shooting Sports and Tabletop. Please follow the instructions below to join! The communication tool can be used on a desktop app and/or app on your phone. We are inviting 4-H youth, 4-H family members, and 4-H volunteers to join! You won't want to miss this!

EPC Shooting Sports

<https://band.us/n/a1ae01J9A6u3h>



EPC Tabletop

<https://band.us/n/abaa06JdAau2J>



Band APP Communications-

Livestock, Horse, Small Animal, Mini Horse & Dog

To help with delivering clear communications, provide an updated event calendar, and send out reminders of county wide programming; I have created an app for five project areas which include Horse, Mini Horse, Livestock, Dog, and Small Animal. Please follow the instructions below to join! The communication tool can be used on a desktop app and/or app on your phone. We are inviting 4-H youth, 4-H family members, and 4-H volunteers to join! You won't want to miss this!

EPC Livestock Project

<https://band.us/n/acaf79qek5u8s>



EPC Horse Project

<https://band.us/n/a6ab71qfkcZ8z>



EPC Small Animal Project

<https://band.us/n/afaf7dq8kaxeb>



EPC Mini Horse Project

<https://band.us/n/a4a60dJ1A2qe0>



EPC Dog Project

<https://band.us/n/a9a703J2Aasar>



What is a 4-H Community Service?



WHAT IS 4-H COMMUNITY SERVICE?

4-H Community Service (or “Service Learning”) is a critical part of the 4-H Learning Experience. Community Service projects provide an opportunity for 4-H members to participate in meaningful activities that help connect them to their community.

WHAT MAKES A GOOD COMMUNITY SERVICE PROJECT?

A Good Community Service Project “TAPS!”

- **Timely**
 - Community Service projects should be relevant to the time in which they occur. Focusing a community service around a specific time of year (like an autumn leaf rake up, or a Valentine’s Day visit to a senior center) is a great way to brainstorm fun ideas! Be creative!
- **Active**
 - Community service projects should always involve some “doing.” Members should be taking an active role in their project.
- **Purposeful**
 - Community service projects should always start with a goal or purpose, and the service should always work towards completing that goal.
- **Selfless**
 - Ultimately, community service should end in a positive result that **does not provide a tangible reward or direct benefit** to the service learners-- although members should absolutely feel pride and personal satisfaction at a job well done!



What is a 4-H Community Service?

WHAT IS AN EXAMPLE OF A GOOD (AND NOT SO GOOD) COMMUNITY SERVICE PROJECT?

GOOD COMMUNITY SERVICE PROJECTS

- Assist with 4-H programs that benefit the community.
- Raise money through donations/drives/programs/etc., for charity organizations.
 - Note: funds raised MUST be directly given to the organization, and CANNOT be deposited first into a 4-H Club or Council account. Club funds CAN be used to further a Community Service Project, like buying notecards for letter writing, but CANNOT be directly donated.)
- Letter writing campaigns.
 - (Military personnel, seniors, etc.)
- City/Community cleanups.
 - (family homes, parks, waterways, cemeteries, etc.)
- Host a supply drive.
 - (holiday toys, food, coats, school supplies, hygiene items)
- Host a garage sale to benefit a community service organization.
- Installing public space goods.
 - (wheelchair ramps, playgrounds, benches, etc.)
- Assist at an animal shelter.
- Organize & Host a Blood Drive.
- Visit folks in need.
 - (Senior centers, children’s hospitals, etc.)
- Plant flowers or trees/clean trails.
- Participate in a charity run/walk.

NOT COMMUNITY SERVICE PROJECTS

- Any fundraising activities meant to benefit a 4-H club or council.
- Attending a community event and promoting 4-H.
- Walking in a parade.
- Assisting a club with regular club duties.
- Raising money on behalf of for-profit entities.
- Cleaning up/providing repairs to State or County Fairgrounds.
- Participating on behalf of political organizations.
- Cleaning up the barn/yard of a family member/friend.

4-H Promotional Activities vs. Community Service

Remember: 4-H Community Service should provide a positive, needed and ultimately selfless benefit to the community. Completing a community service project promotes the 4-H Program in a positive light.

4-H Promotional Activities, while a great way to show 4-H Leadership and promote 4-H, do not qualify as community service projects.



Accommodations Form — **NEW in 2024**

Hello 4-H Families!

As a reminder to all, El Paso County 4-H and Colorado 4-H firmly believe that all 4-H members should be able to participate in 4-H Events and Activities with their peers successfully. This includes providing reasonable accommodation requests made on behalf of 4-H members. In an effort to streamline accommodations requests, El Paso County 4-H has developed a fillable form that can be accessed via the 4-H Website. **This form should be used to request accommodations for each 4-H Event that accommodations may be required.**

Colorado 4-H recognizes that accommodations may be requested orally and in person, up to the date of the event. However, the timing and manner of a request potentially reduces county extension’s ability to determine reasonable accommodation. Because it can take time to plan for some accommodations, El Paso County 4-H requests that the form be submitted no later than 14 days prior to the event or activity. Submitting a request for accommodation on shorter notice may reduce or limit county extension’s ability to implement the accommodations. Please note that the accommodation may not be the one proposed by the participant.

If you have any questions regarding your 4-H member’s participation in a 4-H Event, please email 4-H Specialists **Emily Green** (Emily.Green@colostate.edu) and **Jennifer Loewen** (Jennifer.Loewen@colostate.edu) and they can provide additional information.

[Link to Accommodations Form](#)

What is Premier Exhibitor?

All exhibitors are encouraged to enter! **All entries should be made in Fair Entry.** This award will be given to the outstanding 4-H member (ages 8-18) in each of the project species: beef, sheep, swine, goat (breeding, market, dairy, and pygmy), rabbit, poultry, dog, miniature horse, horse, cavy, and llama/alpaca. The focus of this award is on rewarding excellence in total project management. Contestants will be evaluated on several different areas depending on the species. Please refer to your premium books to see how the scoring is calculated in each of the species. All premier exhibitor study guides will be posted on the county fair resources page of the website (probably around June) for the youth who want to get a head start on studying for the premier exhibitor tests!



Health Certification Requirement for County Fair

Animals are required to have health certifications for County Fair issued within 14 days prior to the start of county fair. Animals required to have a health certification are camelids, miniature horses, and all livestock. Each animal must be individually identified on the certificate. When you load in your animals at county fair, you will need to make sure you have a **printed, hard copy** of your health certificate **for every day you enter the fairgrounds with animals**. The livestock office keeps these on file.



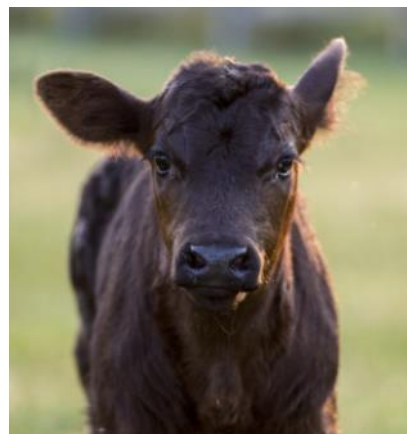
Affordable Health Certification for County Fair

Every year, the Livestock Advisory Committee offers 4-H members the opportunity to haul their animals to a specific location to receive a health certificate for county fair animals. This will take place on **Saturday July 6, 2024, from 8:00-11:00 AM at the El Paso County Fairgrounds.**

Health Certifications cost \$5 per animal and CASH ONLY (exact cash preferred). We will be set up by the Beer Dock so you will enter the south gate, pull over by the Beer Dock, and you will exit the North Gate. A member of the family, adult or youth, must be in attendance to sign the health certificate.

If you would like to obtain a health certificate on this day you will need to show up from 8:00—11:00 AM. There is no sign-up or registration. It is first come, first serve.

Animals are required to have health certifications for County Fair issued within 14 days prior to the start of county fair. Animals required to have a health certification are camelids, miniature horses, and all livestock. Each animal must be individually identified on the certificate. When you load in your animals at county fair, you will need to make sure you have a **printed, hard copy** of your health certificate **for every day you enter the fairgrounds with animals.** The livestock office keeps these on file.





WE CAN HARDLY “BEAR” THE EXCITEMENT!

SAY “HELLO!” TO “OSO”!



Welcome Home Oso!

Oso is the Newest Member of the El Paso County 4-H Team! He is “oh-so” excited to visit our Clubs & Meet the Members!



Oso is a “Traveling Bear” & he’s all packed up and ready to start his 4-H Learning Journey with you! Take him to 4-H meetings, club events & project opportunities to promote El Paso County 4-H!

Log his adventures by snapping a photo, writing in his “Pawspport” book & sharing his adventures with everyone on Instagram @EPC_4H_CO!

We’re “beary” excited to see what adventures Oso will find in El Paso County 4-H!



WANT TO HOST OSO THE BEAR AT YOUR NEXT 4-H CLUB ACTIVITY OR EVENT?

CALL OUR OFFICE AT (719) 520-7690 AND GET ADDED TO HIS CALENDAR!



EL PASO COUNTY
COLORADO STATE UNIVERSITY
EXTENSION



FOLLOW OUR NEW EPC 4-H SOCIAL MEDIA!

The Extension Office will be posting weekly content including spotlights of our 4-H'ers and their projects, showcasing our members at county and state-wide events, as well as highlighting the travels of Oso Brown the Bear!



@ El Paso County 4-H



@ epc_4h_co

Want to be highlighted or know someone who deserves to be in the spotlight!?

Click the links below to be featured!



If you know a 4-H Alumni that would be interested in being featured, please email their contact info to Shawna.Lamothe@colostate.edu or send them the Alumni Form!



[Volunteer Highlight](#)

[Member Highlight](#)

[Animal Highlight](#)

[Alumni Spotlight](#)

Registration for County Fair Dates

Mark Your Calendars!

Entry for the El Paso County Fair opens on Tuesday May 28th and is required for all 4-H General Projects, 4-H Cloverbud, and 4-H Animal projects who would like to exhibit at the 2024 County Fair. All exhibits/animals **MUST** be entered into the online FairEntry system. 4-H families will use their “4honline.com” username and password to log into the FairEntry system.

[Link to 2024 Fair Entry Instructions](#)

Exhibits must be entered by Friday June 7, 2024. A late fee of \$35.00 per family will be assessed for entries received between June 8-11, 2024. After June 11, 2024, absolutely no entries will be accepted.

Once registration is complete and submitted by the family for **ALL** members participating in county fair, it will be reviewed by CSU Extension 4-H staff for approval. Once approved, payment instructions will be sent via email. Please look for these instructions to come from an office staff member. Payment **SHOULD NOT** be sent until all classes are approved by CSU Extension staff.

Payment must be received by 4:30 PM Thursday June 13, 2024.

It is the member’s responsibility to check with the Extension Office to make sure the entry and payment were completed by the deadline.

For help with computer pre-entry, be sure to attend our Help Desk Day on Thursday May 30, 2024 from 3:00 PM—6:00 PM at the East Library!

Reserving Your Camp Space for County Fair

For any questions about this article please reach out to andschanaaljets@elpasoco.com

We are looking forward to a fantastic 2024 El Paso County Fair! Thank you for your dedication to your projects and the 4-H program. **The 4-H discounted ticket page is now open** and you may purchase season passes, additional tickets, carnival passes, and event tickets now.

Camping Registration Opens on May 28th @ 11am on the same page as the discounted tickets.

Directions/Additional Information:

Camping spots are reserved on a first-come, first-served basis. Review the map in advance (already visible) and then **select the space you want from the pull-down menu.**

Last year we sold out in 6 minutes, with many people still having spaces in their carts. If you are looking for an electric space, buy your other tickets before or after, but **check-out campsites individually and quickly.** The computer does not remove them from the inventory until the purchase is complete, so you could lose the one in your cart if you take too long to complete your order.

You may only reserve one space. Each family must reserve their own space. If multiple spaces are purchased by the same account, we will cancel the purchase and make the space available to the next person in line.

Volunteers who earned the 20 hours in 2024 to qualify for early registration will be contacted separately with instructions.

If you plan to bring a dog, they must be approved in advance. Please see the dog form attached to the camping guidelines and email the information to events@elpasoco.com.

For questions or assistance, you can contact the fair office (719) 520-7880.

Packets & Passes will be available for pick up on June 29th from 9am to 12pm at the fair office 366 10th Street Calhan, CO (SWINK HALL). If you're picking up packets for additional people you will be required to sign for each of those packets. If you need to make arrangements to pick up another day, please contact the Fair office to schedule pick up during office hours. All passes must be picked up before the first day of Fair.

4-H Discount Page – Do Not Share.

<https://www.elpasocountyfair.com/p/fair-information/2024-4-h-discounted-tickets>

Fair Cleanup & Livestock Exhibitor Meeting

Mark Your Calendars!

It is an expectation for all youth who are competing at the County Fair this year to attend Fair Cleanup on **June 29, 2024, at the Fairgrounds starting at 8:00 AM.**

There will be a livestock exhibitor meeting beginning at 8:00 AM in the Owens Grandstands and then a sign in sheet for attendance.

If you are enrolled in multiple projects, please pick an area to begin helping with and then check in with your other superintendents.

Tabletop will have a sign in sheet as well in the Whittemore Building.



HEAD



HEART



HANDS



HEALTH

4-H County Fair Pass Pickup

For youth exhibitors participating in the El Paso County Fair and enrolled 4-H volunteers, you can pick up yours fair passes on **June 29, 2024, in Swink Hall from 9:00 AM until 12:00 PM**. These passes are free and come with your participation in County Fair and 4-H volunteering.

However, if you have family members or parents that are NOT enrolled as 4-H volunteers or are 4-H youth NOT participating in County Fair, you need to purchase your fair passes from the fairgrounds through their website. They do provide discount rates for 4-H families. You can find the link to that web page:

<https://www.elpasocountyfair.com/p/fair-information/2024-4-h-discounted-tickets>



4-H Project Talks

EL PASO COUNTY FAIR



EL PASO COUNTY
COLORADO STATE UNIVERSITY
EXTENSION

4-H PROJECT TALKS!

NEW!



SHARE YOUR 4-H PROJECT WITH COUNTY FAIRGOERS!



**MONDAY, JULY 15
AND/OR
WEDNESDAY, JULY 17
11:00 AM - 12:00 PM**

SCAN THE QR CODE TO REGISTER ONLINE!

LIMITED SPACES AVAILABLE!

Colorado State University Extension is an equal opportunity provider. | Colorado State University Extension es un proveedor que ofrece igualdad de oportunidades. <https://col.st/DWMJA>

4-H Youth Camp Counselors Needed!



4-H YOUTH CAMP COUNSELORS NEEDED!



The 4-H Program is looking for several 4-H members aged 13 - 18 to volunteer as 4-H Camp Counselors at fun upcoming 4-H Events this summer!

4-H Youth Camp Counselors Will:

- Meet new people and make new friends
- Learn new skills and gain valuable 4-H Leadership experience
- Make a positive impact in the 4-H Community
- Gain valuable 4-H-Sponsored Community Service hours!



Please email any questions to:

Jen Loewen at: Jennifer.Loewen@colostate.edu



Cake Builders Academy! Day Camp Counselors Needed:

- June 4, 5 & 6
- 9:00 AM - 12:00 PM each day



Summer Fest! Day Camp Counselors Needed:

- Tuesday, June 11
- 7:45 AM - 5:00 PM

Please Scan the QR to Indicate your Interest in becoming a 4-H Camp Counselor this summer!



EL PASO COUNTY
COLORADO STATE UNIVERSITY
EXTENSION

Colorado 4-H State Conference

Attention Senior 4-H Members Aged 14-18!

Colorado 4-H State Conference registration is Now Open in 4HOnline!

4-H State Conference is an amazing opportunity to practice “Adulthood” at the CSU Campus in Fort Collins! Participants will select courses and workshops based on their interests, (in Family Consumer Science, STEM, Horse, Livestock, or Leadership tracks) and participate in amazing learning opportunities with their peers from all around the state! This is an awesome learning opportunity for Senior 4-H members and a great opportunity to stay and play at the dorms at CSU! This is also where 4-H members who qualified for a State Contest will compete. [A List of State 4-H Contests can be found here.](#)

[Check out the descriptions of 4-H State Conference Workshops HERE!](#)

- 4-H State Conference will be held onsite at Colorado State University, June 18-21 this year.
- The Conference is \$150 per youth participant (including those participating in contests)
 - Please plan to bring money for lunch on Tuesday, a nice County Night Out Dinner on Thursday Night (approx. \$35), and lunch on Friday, plus any additional spending money for the campus bookstore or snacks.
 - Contest fees will be covered this year.
 - **Transportation to and from the Conference will be provided by 4-H Chaperones.**

How to Enroll: Enrollment is open now in [4HOnline](#). [A very helpful registration video can be found at this link.](#)

- Please select the 3-Night Stay Option when you enroll (Tuesday, Wednesday, Thursday)
- If you are returning early from State Conference, you are responsible for getting transportation back home. Please keep us updated in your plans.
- All Contest Coaches must also register in 4HOnline before the registration deadline.
- **El Paso County Registration CLOSES on Friday, May 10. The Conference may fill up prior to this date, so register as soon as possible!**

Colorado 4-H State Conference Cont’d

Paying for Registration

- **All payments are due to the Extension Office by Friday, May 17.**

Registration Payments:

ALL Registration Fees are due to the Extension Office by **Friday, May 17.**

- *There are three ways to pay your registration fee: **Please note that the Office is closed from 12:00 PM to 1:00 PM each day for lunch.***
- **Write a check.**
 - Checks should be made out to Colorado State University Extension (please put “El Paso County 4-H – State Conference” in the memo line)
 - Checks should be brought to the Extension Office (17 N. Spruce Street, 80905).
- **Pay with Cash.**
 - Cash should be brought to the Extension Office (17 N. Spruce Street, 80905)
- **Credit/Debit Card payment in-person or over the phone.**
 - Please note that there **MAY** be a nominal service fee added to any credit or debit card charge.

The El Paso County 4-H Foundation has scholarship opportunities available to Interested participants!

[Click here to access 4-H Scholarship application.](#)

- Please mail your application to: **El Paso County 4-H Foundation, c/o Kathy Hisey, President 24 Circle C Road Fountain, CO 80817**

Or email to epc4hfoundation1@gmail.com

- **Please note that scholarships are retroactive, and any scholarship received will arrive after members pay the office. Members MUST pay the full fee to the Extension Office. All scholarships are handled through the El Paso County 4-H Foundation.**

The Wizarding World Retreat—Senate District 3

Junior 4-H Members felt the “Magic” of 4-H at this year’s District 3 Senate Retreat!

Participants made broomsticks (learning about design!), mixed potions (learning about chemical reactions!) played Quidditch (while marking SMART goals!) and learned all about how each Hogwarts House shows Characteristics of Leadership.

Participants were sorted into “houses” (Gryffindor, Slytherin, Hufflepuff and Ravenclaw) while learning all about the positive leadership qualities of each. Whether it was the curiosity and wit of Slytherin or the kindness and loyalty of Hufflepuff, there was something for everyone.

Put on by members of the State Senate in District 3, participants had a great time connecting with other 4-H members from Jefferson, Adams, Arapahoe, El Paso and Douglas counties. By the end of the event members had met friends from all over District 3 and made lasting memories. This day-long event provided Junior 4-H members the chance to engage with others, learn new skills, play fun games and learn about the “Magic” that makes them unique.



Youth Fest 2024—Rising to Olympus

4-H members had the opportunity to “Go the Distance” at this year’s 4-H Youth Fest!

With the theme of Olympic Games, members spent three days learning what it takes to be a “Gold Medal” 4-H member. Members had the opportunity to learn about health and nutrition while making granola, learned about teamwork while navigating tricky tennis ball balancing, and make fashionable, recyclable Greek Monsters at the “Trashion” Show. Members also participated in other Olympic activities such as the Ag Olympics and 4-H dance. Altogether, almost 100 4-H members came together and met new friends from all over the State of Colorado. 4-H Youth Fest is a great opportunity for Intermediate members to practice new skills and gain confidence. Check it out next year!



County Contest State Qualifiers!

CONGRATULATIONS!

To the Following 4-H Members for their Qualifying Scores at 4-H County Contest Day!

Demonstrations & Illustrated Talks:

| Last | First | Division | Class | Qualifier |
|-----------|-----------|----------|-------|--------------------|
| Ramos | Lillian | JR | 700 | Blue |
| Green | William | JR | 700 | Blue, Res Champion |
| Ramos | Gabrielle | JR | 700 | Blue, Champion |
| Waltz | Xzander | INT | 702 | Blue |
| Dotson | Graciela | INT | 702 | Blue, Res Champion |
| Gates | Aaelynn | INT | 702 | Blue, Champion |
| Moore | Annabella | SR | 704 | Blue |
| Schroeder | Taylor | SR | 704 | Blue, Res Champion |
| Holiday | Conner | SR | 704 | Blue, Champion |



Demonstrations & Illustrated Talks – TEAMS:

| Last | First | Division | Class | Qualifier |
|------------|----------|-----------|-------|----------------|
| VanTilborg | Scarlett | JR - TEAM | 701 | Blue |
| Derby | Anya | JR - TEAM | 701 | Blue |
| Hudson | Moriah | SR - TEAM | 705 | Blue, Champion |
| Kath | Landyn | SR - TEAM | 705 | Blue, Champion |

Interpretive Reading:

| Last | First | Division | Class | Qualifier |
|-----------|--------------------|----------|-------|--------------------|
| Lujan | Samuel | JR | 706 | Blue |
| Schroeder | Alexander (Xander) | JR | 706 | Blue, Res Champion |
| Lujan | Elena | JR | 706 | Blue, Champion |
| Schroeder | Jane (Jayna) | INT | 707 | Blue, Champion |
| Hodge | Caitlyn | SR | 708 | Blue, Res Champion |
| Schroeder | Elizabeth (Lizzie) | SR | 708 | Blue, Champion |



Prepared Speech:

| Last | First | Division | Class | Qualifier |
|-----------|--------------------|----------|-------------------|-----------------|
| Schroeder | Elizabeth (Lizzie) | SR | 3 Prepared Speech | Blue, Res Champ |
| Niemeyer | Time | SR | 3 Prepared Speech | Blue, Champ |

Impromptu Speech:

| Last | First | Division | Class | Qualifier |
|---------|--------|----------|----------------------|-----------------|
| Edwards | Paul | SR | 6 - Impromptu Speech | Blue, Res Champ |
| Holiday | Conner | SR | 6 - Impromptu Speech | Blue, Champ |

These members will advance to their State-Level Contests at either the Colorado State Fair, or 4-H State Conference. We wish them all Good Luck!



County Contest Champion & Reserve Champions!

CONGRATULATIONS!

To the Following 4-H Members for Their Reserve Champion & Champion Scores in a County-Level Contest at 4-H County Contest Day!

| Performing Arts - Piano/Keyboard - JR | | | | | |
|---------------------------------------|-----------|----------|-------|-------|-----------------|
| Last | First | Division | Class | Score | Ribbon |
| Richards | Elizabeth | JR | 1011 | 94 | Blue, Res Champ |
| Wilcox | Ellie | JR | 1011 | 97 | Blue, Champ |

| Performing Arts - All Other Instruments - JR | | | | | |
|--|--------|----------|-------|-------|----------------|
| Last | First | Division | Class | Score | Ribbon |
| Lee | Adalyn | JR | 1001 | 86 | Blue, Champion |

| Performing Arts - All Other Instruments - INT | | | | | |
|---|--------|----------|-------|-------|----------------|
| Last | First | Division | Class | Score | Ribbon |
| Richards | Andrew | INT | 1002 | 96 | Blue, Champion |

| Performing Arts - Dance - INT | | | | | |
|-------------------------------|-------|----------|----------------|-------|-------------|
| Last | First | Division | Class | Score | Ribbon |
| Schroeder | Jane | INT | 02 - INT. Solo | 97 | Blue, Champ |

| BAKEOLOGY | | | | |
|-----------|-----------|----------|---------------------------|-----------------|
| Last | First | Division | Class | Ribbon |
| Lee | Adalyn | JR | 1 - Cookies/Bars/Brownies | Blue, Champ |
| Nelson | Eliza | JR | 1 - Cookies/Bars/Brownies | Blue, Res Champ |
| Hudson | Shannon | INT | 1 - Cookies/Bars/Brownies | Blue, Res Champ |
| Nelson | Emma | INT | 1 - Cookies/Bars/Brownies | Blue, Champion |
| Silvia | Meyer | SR | 1 - Cookies/Bars/Brownies | Blue, Res Champ |
| Richards | Laura | SR | 1 - Cookies/Bars/Brownies | Blue, Champion |
| Hudson | Shannon | INT | 2 - Muffins/Quickbreads | Blue, Res Champ |
| Hayes | Cora | JR | 2 - Muffins/Quickbreads | Blue, Champ |
| Richards | Elizabeth | JR | 2 - Muffins/Quickbreads | Blue, Res Champ |
| Richards | Andrew | INT | 3 - Yeast Bread | Blue, Champ |
| Ginsburg | Lydia | INT | 3 - Yeast Bread | Blue, Res Champ |
| Nelson | Eliza | JR | 3 - Yeast Bread | Blue, Champ |
| Nelson | Eliza | JR | 5 - Pies (Fruit Only) | Blue, Res Champ |
| Derby | Anya | JR | 6 - Decorated Cakes | Blue, Champ |
| Hayes | Cora | JR | 6 - Decorated Cakes | Blue, Res Champ |
| Ginsburg | Lydia | INT | 6 - Decorated Cakes | Blue, Res Champ |
| Nelson | Emma | INT | 6 - Decorated Cakes | Blue, Champ |

| BAKEOLOGY - BAKERS OF THE DAY | | | | | |
|-------------------------------|--------------------|----------|---------------------------|-------------|-------------------------------|
| Last | First | Division | Class | Ribbon | Special Award |
| Schroeder | Elizabeth (Lizzie) | SR | 1 - Cookies/Bars/Brownies | Blue | Baker of the Day - SENIOR |
| Nelson | Emma | INT | 2 - Muffins/Quickbreads | Blue, Champ | Baker of the Day INTERMEDIATE |
| Buesing | Derek | JR | 5 - Pies (Fruit Only) | Blue, Champ | Baker of the Day - JUNIOR |



EL PASO COUNTY
COLORADO STATE UNIVERSITY
EXTENSION

Congratulations to these members for their Excellent Scores in Bakeology & Performing Arts!



Youth County Council Silent Auction Fundraiser

Sign Up to Bring a Silent Auction Basket [HERE](#)

YOUTH COUNTY COUNCIL

SILENT AUCTION FUNDRAISER



SUPPORT THE YCC SILENT AUCTION FUNDRAISER!

Support the El Paso 4-H Youth County Council by sponsoring Silent Auction items/baskets to be auctioned off at this year's 4-H Achievement Ceremony!

All fundraiser proceeds go to support YCC members with travel costs associated with camps, conferences and other 4-H Opportunities. All 4-H Clubs & Councils are invited to participate!

SUGGESTED BASKETS/ITEMS:

Baskets should be labeled with approximate total value. Get creative with your themes! Some suggestions are:

- Movie Night theme basket
- Livestock/show basket theme
- Jewelry/lotions/bath bombs
- Non-perishable food items
- 4-H theme basket
- Game night basket theme
- Small toys/books
- Art supplies theme
- Day at the Beach theme basket
- Please No alcohol/alcohol theme Items




EL PASO COUNTY
COLORADO STATE UNIVERSITY
EXTENSION

SIGN-UP TO BRING A SILENT AUCTION BASKET HERE!

All Silent Auction Baskets/Items should be delivered to the Extension Office on E-Record Turn-In day Wednesday, September 4, and will be transported to the 4-H Achievement Celebration.

Questions? Email Jen Loewen at:
Jennifer.Loewen@colostate.edu

Youth County Council Panda Express Fundraiser

FUNDRAISER FOR
4-H District 3 Senate

VIRTUAL COMMUNITY
FUNDRAISERS



When

**Wednesday, May 08,
2024**

Place your order for pickup
or delivery on Wednesday,
May 08 !



Where

**Available at Panda
Express locations
nationwide**

www.pandaexpress.com



How

Online orders only

Apply code **922740** in the
Fundraiser Code box
during online checkout at
www.pandaexpress.com
or via App

28% of sales will be donated to: 4-H District 3 Senate

Pop Tab Collection Winners!

POP TAB COLLECTION WINNERS!

Congrats!

GRAND DRIVE 4-H CLUB
60.3 LBS

GREENER PASTURES 4-H CLUB
2 LBS

A-OK 4-H CLUB
1 1/2 LBS

HEARTS & HOOVES 4-H CLUB
1 LBS

4 2 1 3

The graphic features a podium with four steps labeled 4, 2, 1, and 3 from left to right. The 1st place step is the tallest and has a crown above it. The 2nd place step is shorter than the 1st. The 3rd and 4th place steps are the shortest and of equal height. To the left of the podium is a large pop tab, and to the right is a pile of pop tabs. The background is a light teal color.

Thank you to all the Clubs and 4-H Members that Collected Pop Tabs for the Ronald McDonald House Charities!



Cam’s Ag Academy

[Sign Up Link](#)



JOIN US FOR CAM’S AG ACADEMY AT THE EL PASO COUNTY FAIR!

About CAA
CAM’s Agricultural Academy is committed to the engagement of all students to improve relationships in agriculture and strengthen agriculture affinity, literacy, motivation and critical thinking.

“Ewe” Can Help!
4-H Members in El Paso County have the opportunity to sign up and help CSU students teach Cam’s Ag Academy lessons at the El Paso County Fair!
No previous knowledge required- CSU students will teach you everything you need to know on the day!
Hours served will count towards 4-H community service!

Booth Hours & Sign-Up
Be part of Cam’s Crew on **Wednesday July 17, Thursday July 18 or Friday July 19** during Fair.
Booth hours are: **12:00 - 6:00 PM**
[Sign-Up By Clicking Here!](#)

Questions?
Contact Jonathan Vrabec with any questions regarding Cam’s Ag Academy:
Jonathan.Vrabec@colostate.edu

  **EL PASO COUNTY**
COLORADO STATE UNIVERSITY
EXTENSION

Colorado State University Extension is an equal opportunity provider. | Colorado State University Extension es un proveedor que ofrece igualdad de oportunidades.
<http://col.st/0VM12A>

Looking Forward—Horse

HAC Qualifying Hunter Hack Clinic on May 19, 2024, at Latigo at 9:00 AM

This is a required qualifying clinic for youth who would like to show in the Hunter Hack class offered at County Fair. They must attend the clinic and safely pass umping. It is available to all 4-H El Paso County Youth in the Horse Project (even if they do not plan to show in the Hunter Hack classes).

The first session will be poles which is offered for anyone NOT planning on showing Hunter Hack classes at fair. This gives them a chance to safely learn the fundamentals and begin the building blocks to jumping. This will go from 9:00-10:30 AM

The second session will be for those youth who have been practicing and are ready to show the Hunter Hack class at county fair. This will go from 10:30 AM-12:00 PM.

[Link for Registration](#)



Looking Forward—Horse

May 11, 2024 (Eyleen's Arena)

- Qualifying Ranch Horse Show at 10:00 AM
- Show bill and patterns are posted on the Band App

May 19, 2024 (Latigo)

- HAC Qualifying Hunter Hack Clinic at 9:00 AM
 - This is a required qualifying clinic for the youth who would like to show in hunter hack classes at county fair. They must attend the clinic and be passed as safe. **It is available to all 4-H El Paso County Youth in the horse project (even if they do not plan to show in hunter hack classes).**
 - Poles will be offered from 9:00-10:30 AM and Safety Testing for Hunter Hack will be offered from 10:30 AM—12:00 PM
 - Link for Registration:
 - <https://docs.google.com/forms/d/e/1FAIpQLSeCVbpyB9tWjAoWrm-Jmof6rrWK9RG9w3nBYij-jnk0JECedg/viewform>

June 1, 2024 (Latigo)

- Qualifying English/Western Show at 10:00 AM
- Show bill is posted on the Band App
- Patterns will be posted on the Band App

June 5, 2024 (Extension Office)

- County Fair Test, Interview, and Patterns at 5:30 PM
- Sign up for Premier Exhibitor Contest by May:
 - <https://docs.google.com/forms/d/e/1FAIpQLScoQtcYSeoVCxHTDOksBCzvqjiR-Or0ZA9O99FH9TfpdjYXIA/viewform>

June 8, 2024 (Eyleen's Arena)

- Qualifying Gymkhana Show at 10:00 AM
- Show bill is posted on the Band App
- Patterns (showmanship) will be posted on the Band App

June 22-23, 2024 (Latigo)

- County Fair Horse Show

El Paso County 4-H Horse Judging

The Horse Judging Team is still in search of new members! We would love to see new faces at the weekly practices every Thursday that are held at the **Environmental Services Building (3255 Akers Dr. Colorado Springs, CO 80922)** Come to the backdoor and knock as it stays locked.

If you want more information, please contact Jonathan at Jonathan.vrabec@colostate.edu.



Looking Forward– Miniature Horse

May 12, 2024 (Fairgrounds)

- Miniature Horse Show

May 24-26, 2024 (Longmont)

- Rocky Mountain Miniature Horse Club Horse Show

May 31, 2024 (Fairgrounds)

- Hunter Course at 10:00 AM and ground driving/driving to follow

June 5, 2024 (Extension Office)

- County Fair Test. Interview, and Patterns at 5:30 PM
- Sign Up for Premier Exhibitor Contest by May 24:
 - <https://docs.google.com/forms/d/e/1FAIpQLScoQtYSeoVCxHTDOksBCzvjR-Or0ZA9O99FH9TfpdjYXIA/viewform>

June 7, 2024 (Fairgrounds)

- Miniature Horse Show



Mini Horse Open Show

All fees collected benefit the
El Paso 4-H Miniature horse
project.

May 12 2024
Owens Livestock Arena
366 10th St
Calhan, CO
80808

3RD ANNUAL MINIATURE OPEN HORSE SHOW



WE OFFER

Ground Driving & Driving
Liberty
In-hand classes
Gymkhana
Costume

FOR MORE INFO or
to PREREGISTER:

email Randi Hudson
randaleehudson@yahoo.com



EL PASO COUNTY
COLORADO STATE UNIVERSITY
EXTENSION

Market Goat and Sheep Tag In

Friday May 10th, 2024

Owens Arena- El Paso County Fairgrounds

Any youth member that plans on showing MARKET goat and/or sheep at county fair needs to fill out the google survey below **by April 19, 2024.**

https://docs.google.com/forms/d/e/1FAIpQLSdwSrB-DLFfgGyQx92qZ27AyOjIKSngzXpDHZs2NjeulUoz6g/viewform?usp=sf_link

Time Blocks: We will not be differentiating between species so bring goats and/or sheep based on your last name.

Family has youth in the swine project (5:30-6:00 PM)

Last name beginning with A through L (6:00-7:00 PM)

Last name beginning with M through Z (7:00-8:00 PM)

Expectations:

- Please be on time!
- We believe in giving priority to those scheduled in their slot so we will not allow families who are late or miss their time slot to cut in front of others.
- If our team is running behind, please be patient as we are working with live animals, technology, and a new process so sometimes it does not go as planned or expected.
- Only **CASH** will be accepted the day of tag in (read below for details on price breakouts)
- State Fair Nominations will only be accepted the day of tag in (make sure you have your premise ID and cash), no exceptions.

REMEMBER: All animals must be castrated prior to being weighed and tagged in as a 4-H Market project. Castration must be done prior to arriving at the fairgrounds (Not the day of tag in) and healed as much as possible.

CONTINUED ON THE NEXT PAGE.....

Market Goat and Sheep Tag In

Things to know before coming:

- You must bring your animal with a halter already on before it is unloaded, or it will not be tagged or weighed. The idea is to work with them ahead of time.
- If your animals are sick or show signs of sore mouth and/or fungus, please email Emily.Green@colostate.edu and we will have you go across the scale and tag in at the end.
- Market ewes and market does MUST be scrapies tagged before tag-in.
- Must Park in the South Parking Lot and stay off the concrete in the Owens Livestock Arena. Youth will walk their animals through the south sheep/goat barn and into the arena.
- Tag-in is the only time State Fair Nominations will be taken and will cost \$3 to nominate per animal (cash only)
 - Remember all 4-H exhibitors must have their premise ID# on their nomination cards to be accepted for State Fair. This is a State Fair Policy. **NOT** a requirement to participate in the local 4-H program. This information should be completed on ALL cards at the time of tag-in.
 - You will need to apply for your premise ID number well in advance of tag in so they have time to assign you one. Please do so 3-4 weeks before you need it. Please call 303-869-9000 to get your ID or visit the website at <https://ag.colorado.gov/animals/colorado-location-identification-lid-registration-premises>
- Retinal scans at tag-in are \$3.00 per animal due at tag in (CASH ONLY). The first 6 ear tags free, \$1.00 per tag over six. Only cash will be accepted. Fees are due on the date of tag in.
- If the weather is bad, please understand we will need to block off a different weekend.

“Learn by doing”

Market Swine Tag Drop Off

Please mark your calendars for **Friday May 10th, 2024 from 5:00—6:30 PM to drop off your packets in Owens Arena (El Paso County Fairgrounds)**. Please use the original packet given to you to store all your required elements. The checklist of what should be in the packet is:

- DNA Envelopes sealed with provided sticker
- County Fair Nomination Forms (and State Fair Nomination Form if applicable) make sure all the information is filled out along with signatures
- Clearly printed photographs of hogs (what is required for the photos will be stated in your packet when you pick it up)
- Any extra tags you did not use



Out of County Form for Showing Livestock

In reference to the 2024 4-H/FFA Livestock Premium Book we have two items concerning multiple animals in the same class. In the event an exhibitor has multiple animals in the same class:

- A 4-H/FFA youth in good standing from the county with parent permission may show the extra animal
- OR a 4-H/FFA youth in good standing from out of county with parent permission may show the extra animal in addition to meeting these requirements:
 - An out of county form request must be filled out and submitted to the CSU Extension agent four weeks before the first day of county fair (June 13, 2024). A youth member is limited to 2 forms maximum. Each form will cost \$5. https://el Paso.extension.colostate.edu/wp-content/uploads/sites/44/2024/03/EPC-Out-of-County-Form_24.pdf
- OR if an exhibitor in a market class ends up with multiple animals in the same class, they can elect to move one animal up to the next heavier weight class but not down to the lighter class. The Out of County form has been attached for reference and you can find it on the El Paso County website

4-H Sheep Clinics

**Nutrition Program to be held
April 23rd at 6:30pm at the
Akers Building (3274 Akers
Dr., 80922)**

Ever wonder what the best options and products to use to get your mkt lamb projects looking their best for the big show? How about learning why you feed sheep different



than you do some other species? At this educational workshop we are going to get into lamb nutrition. You will learn about the

sheep's digestive tract and what makes different from yours. What nutrients your lambs need and when. You will come away with a better understanding of how different feed stuffs work inside of the animal. We will also demonstrate how a ration is developed. We will get into the sometime head spinning world of supplements, how they are used, what works and what might just be a waste of money. **Please sign up by noon on April 23rd using the link below.**

**Sheep Training and Daily
Prep Workshop to be held
May 29th at 6:30pm at the El
Paso County Fairgrounds
(366 10th St, 80808)**

This hands-on program will help you learn how to train your animal to walk on a halter, and then by hand. We will also practice how to start teaching them to set their feet. We will cover daily care and conditioning so your animal will look and feel their best on show day. In fact, have you ever wondered what the judge is feeling your animal for in the show



ring or what judges mean when they say one animal feels fresh, 12 O'clock, washed the loin, over conditioned, too fat, green, stale etc.

will have some hands-on examples and let you handle and feel what different animals are like and discuss what different terms judges use to describe show lambs. For this workshop you will want to bring 1-2 of your project animals as well as a halter, any combs/brushes you use on your lambs and a bucket. Animals do not have to be clipped/sheared but if they are, that is good. **Please register by May 28th 4 p.m. using the link below.**

[April Registration LINK](#)

[May Registration LINK](#)

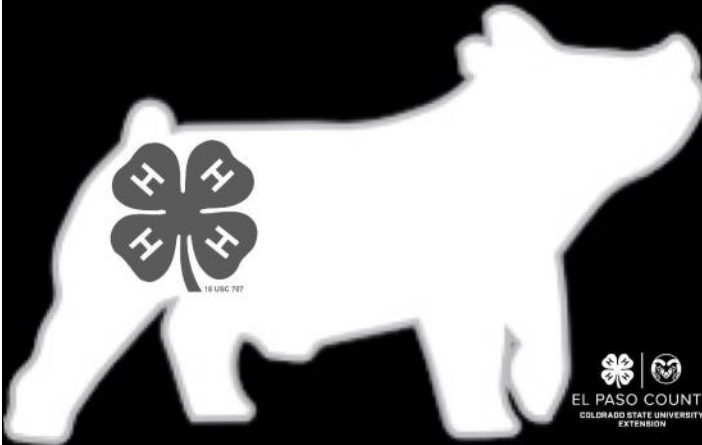
Rendezvous on the Range Show


[Registration Link](#)

RENDEZVOUS ON THE RANGE

May 18, 2024

rendezvousontherange@gmail.com






EL PASO COUNTY
COLORADO STATE UNIVERSITY
EXTENSION

Show Start Time: 9:00am
Show will start with breeding at 9:00am.
Market will follow 30 minutes after the breeding show ends.
Weights will be declared before the show starts. Weight cards are due by 8am. The scale will be open from 6:30-7:45am.
Pre-Entry: \$30/head. Use the link to register and pay on Eventbrite by May 15th at 11:59pm.
Day of show entry: \$45/head
CASH AND CHECK ONLY
Showmanship: \$10 CASH ONLY at the gate.
Judge: JT Gilmore
El Paso County Fairgrounds
366 10th St, Calhan, CO 80808

<https://www.eventbrite.com/e/2024-rendezvous-on-the-range-swine-show-tickets-853931350657?aff=oddticketcreator>



Market Beef Re-Weigh for Rate of Gain Contest

If you have youth enrolled in the market beef project that are interested in entering the rate of gain contest for market beef, **the re-weigh in date will be on May 11th from 7:00 AM—8:00 AM.** If you miss the time frame for the re-weigh you will not be eligible for the contest, no exceptions. The animals must be led across the parking lot and scale as there will not be any alley ways to help guide. To be eligible for this contest, one of the required steps is going to the re-weigh date listed above. The entire contest is outlined in the premium book if you have more questions.



Practices

Saturday May 4—Rifle, Pistol, and Muzzleload @ Frontier Sportsman’s Club Hanover

[https://www.signupgenius.com/go/9040F45ABA62AA0FA7-47982681-05042024#/
/](https://www.signupgenius.com/go/9040F45ABA62AA0FA7-47982681-05042024#/)

Sunday May 5– Shotgun @ Pikes Peak Gun Club

[https://www.signupgenius.com/go/9040F45ABA62AA0FA7-48264966-05052024#/
/](https://www.signupgenius.com/go/9040F45ABA62AA0FA7-48264966-05052024#/)

Saturday May 11—Archery & Beginner Shotgun @ Frontier Sportsman’s Club Hanover

[https://www.signupgenius.com/go/9040F45ABA62AA0FA7-48264635-05112024#/
/](https://www.signupgenius.com/go/9040F45ABA62AA0FA7-48264635-05112024#/)

Thursday May 16—Rifle @ Colorado Parks and Wildlife

[https://www.signupgenius.com/go/9040F45ABA62AA0FA7-47982673-05162024#/
/](https://www.signupgenius.com/go/9040F45ABA62AA0FA7-47982673-05162024#/)

Sunday May 19—.22 Pistol Silhouettes & Muzzleload Gongs @ Frontier Sportsman’s Club Hanover

[https://www.signupgenius.com/go/9040F45ABA62AA0FA7-47982705-05192024#/
/](https://www.signupgenius.com/go/9040F45ABA62AA0FA7-47982705-05192024#/)

Thursday May 23—Pistol @ Colorado Parks and Wildlife

[https://www.signupgenius.com/go/9040F45ABA62AA0FA7-47982698-05232024#/
/](https://www.signupgenius.com/go/9040F45ABA62AA0FA7-47982698-05232024#/)

Saturday May 25—Shotgun @ Pikes Peak Gun Club

[https://www.signupgenius.com/go/9040F45ABA62AA0FA7-48264967-05252024#/
/](https://www.signupgenius.com/go/9040F45ABA62AA0FA7-48264967-05252024#/)

Shooting Sports Tattoo Party at the County Fair!

[Sign Up Link](#)

4-H SHOOTING SPORTS
*Tattoo Party at
the El Paso County Fair!*

4-H Shooting Sports Members & Volunteers can
Sign up to give County Fair-Goers
Temporary Tattoos and talk about
El Paso County 4-H Shooting Sports!

Sign-Up Here!

WHITTIMORE BUILDING
366 10TH ST, CALHAN, CO 80808

JULY 17 - 18, 2024

 
EL PASO COUNTY
COLORADO STATE UNIVERSITY
EXTENSION

Colorado State University Extension is an equal opportunity provider. | Colorado State University Extension es el proveedor que ofrece igualdad de oportunidades. https://col.st/OWM3A.

[Pre-Registration Link](#)



2024 EL PASO COUNTY 4-H DOG SHOWS

Who: Calling all members in the Colorado 4-H dog project!

When- June 1st and 2nd; Check in at 8:00 A.M; Show will start at 9:00

Where- El Paso County Fairgrounds, Whitmore building

What- Join us for 2 days of fun at El Paso County's annual dog shows! We will be offering all showmanship, obedience, and rally classes both days!

Food- Concessions will be available.

REGISTRATION FEES- \$5 per dog per discipline/event (cash or check paid at Check in)

Contact-

Alicia Christie: allnatural74@gmail.com or text (719)351-6098

Sabrina Christie: 4hgirl.sc@gmail.com

***Pre-registration Required; Registration closes May 15th:**

<https://forms.gle/98cwDaUEEvUzw3Mt7>



CAT PROJECT MEETINGS UPDATE!

March 19- 5pm High
Prairie Library, Falcon

April 9-5:30pm
Extension Office
(Bring your cats)

May 21- 5:30pm
Extension Office
(Bring your cats)

June 18- 5:30 pm
Extension Office
(Bring your cats)

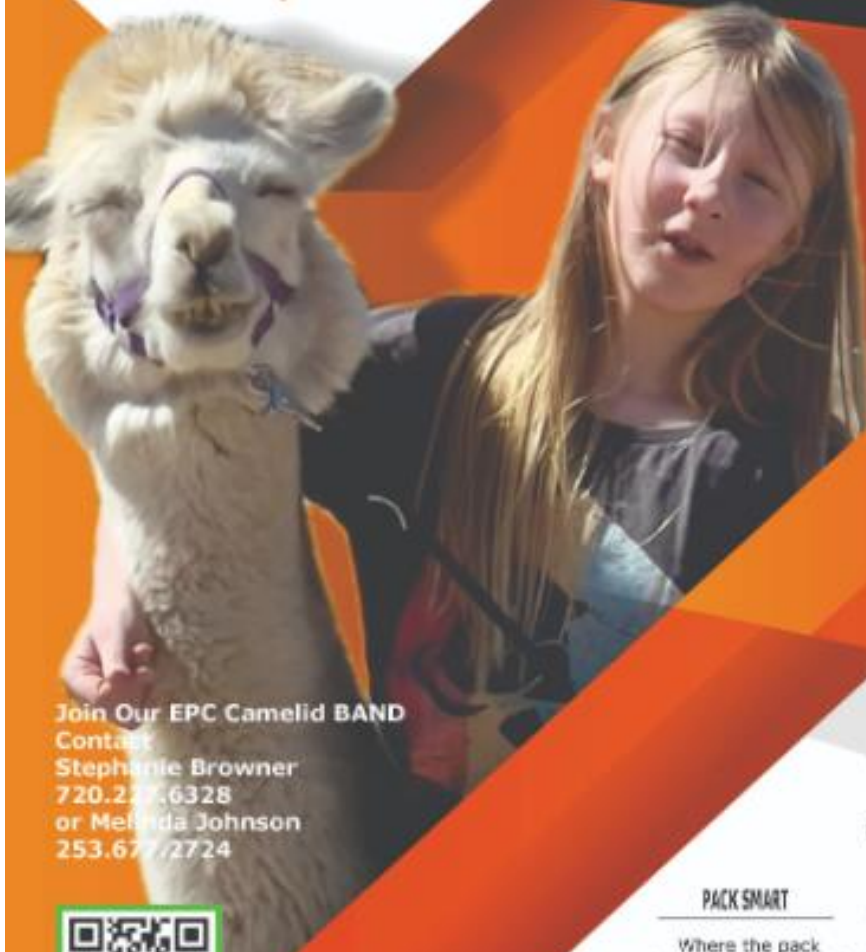




EPC CAMELIDS

Llama Pack Demonstration: GUEST INSTRUCTORS

Join us for a hands-on demonstration with special guest instructors Bella Moore and our very own Alexia Moore. Learn the proper techniques and skills for fitting a pack.



Join Our EPC Camelid BAND
Contact
Stephanie Browner
720.227.6328
or Melinda Johnson
253.677.2724



We'll cover everything you need to know, including:

PREP WORK

What to do before you even place the pack on your animal.

PERFECT PLACEMENT

Where to position the pack for walking and resting.

PACK SMART

Where the pack should sit before and after you put it.

STRAP SAVVY

Which straps to tighten first and how to get the perfect fit.

WEIGHTY MATTERS

How much your camelid can safely carry.

Juniors, relax! You won't be putting packs on alone in the arena. Guardians are there to help you!

Remember: Proper pack fitting isn't just about competition scores – it's about your animal's safety and comfort!



**EPC CAMELIDS
GAME NIGHT
MAY 19TH 1:00 PM
ZOOM**

YOU'RE INVITED!

Put your Camelid knowledge into action in this fun, fast-paced Jeopardy game.



**GROOMING
101:**

Tools, techniques, and the importance of clean critters!



**SHEARING
SECRETS:**

Methods, cuts, and why we shear.



**HAPPY &
HEALTHY:**

Housing, fencing, and being a responsible owner.

JEOPARDY

A lively Jeopardy-style game all about llama and alpaca care, showing, and more!

TOGETHER

This is a fun way to learn more about llamas and alpacas. Don't miss out!

Ace Llama & Alpaca Jeopardy! Fill in the Guide, Use the Answers during the Game & Get Ready to Win!



Contact Us:
**720.227.6328 or
253.677.2724**



EPC CAMELID FUNDRAISER

Tired of harsh
chemical fertilizers?
Help support our
project and get the best
natural fertilizer.

Camelid GOLD

The best natural
fertilizer!



Natural Powerhouse: Packed with essential nutrients

Nitrogen, potassium, and
phosphorus for healthy
plant growth.



Gentle Touch: Unlike other manures

Alpaca manure is low in odor
and won't burn your plants,
making it perfect for
beginners.

Breaks down quickly,
enriching your soil with
valuable organic
matter.



Water Wise: Improves soil structure

Better water retention,
reducing watering needs.

Eco-friendly and renewable
fertilizer for a happy planet.

JUNE 2nd 9:30 am-2:00pm
Phelan Gardens

4955 Austin Bluffs Pkwy
Colorado Springs, CO 80918

Camelid Gold



Watch your garden thrive!

720.227.6328



EPC CAMELIDS

GET
READY TO
SHOW!



TWO GUESTS

Cultural Exploration & Camelid Photos

1 Showmanship Skills: Practice those quarters and perfect your technique! Please find the quarter practice guide on the BAND App in "files" section



2 Special Guest Speaker: Learn about amazing Peruvian alpaca culture and traditions!



3 Member Photoshoots: Clara Martinez from the Photography Project will capture you and your camelid



QUESTIONS? Contact 720.227.6328 or 253.677.2724

Hello 4-H Tabletop Exhibitors!

The **2024 El Paso County Fair Guide for Project Exhibits & Contests** is now available! Please visit: <https://elpaso.extension.colostate.edu/county-fair/> to view the Guide.

If you are interested in exhibiting your project at the El Paso County Fair, or participating in a County Fair Contest, this guide is for you!

The Guide will provide an important overview of:

- Important County Fair Dates
- El Paso County County-Level Exhibit Requirements
 - *Cloverbuds, Pocket Pets exhibits (NEW this year!), Self-Determined exhibits*
- All State-Level Projects and Exhibit Requirements
- El Paso County Fair General 4-H Exhibit Rules & Premiums
- All State-Level Contests
 - *4-H Shooting Sports County Competition, Creative Cooks & Fashion Revue*
- STAR Award & El Paso County 4-H Shooting Sports Marksmanship Award Requirements
- **AND MORE!**

Please let me know if you have any questions. We look forward to seeing what you plan to exhibit at the El Paso County Fair this year!

Jen Loewen

4-H Specialist

Jennifer.Loewen@colostate.edu



Fashion Revue

El Paso County 4-H Fashion Revue Contest

WED, JULY 17

1:00 PM - JUDGING

3:00 PM - COMMUNITY SHOW



Join El Paso County 4-H for their Annual Fashion Revue Contest!

4-H Members Enrolled in:

- Clothing Construction
- Artistic Clothing
- Buymanship
- Leathercraft
- Heritage Arts (Knitting, Crochet, etc.)
- Cloverbuds Project

...Are Eligible to Participate in Fashion Revue!

**ENROLL IN
FAIR-ENTRY!**

Model your clothing items and share your Creativity, Style, and Confidence with the Crowd!

Senior Qualifiers will advance to the Colorado State Fair Fashion Revue Contest!



EL PASO COUNTY
COLORADO STATE UNIVERSITY
EXTENSION



Fashion Revue

4-H Fashion Revue Workshop!



WED, MAY 22
6:30 PM @ THE EL PASO
COUNTY EXTENSION OFFICE

Learn about the Fashion
Revue Contest at
County Fair!

Register in
4HOnline by
Fri. May 17!

4-H Members Enrolled in:

- Clothing Construction
 - Artistic Clothing
 - Buymanship
 - Leathercraft
 - Heritage Arts (Knitting, Crochet, etc.)
 - Cloverbuds Project
- ...Are Eligible to attend the workshop!



EL PASO COUNTY
COLORADO STATE UNIVERSITY
EXTENSION

Recap and Upcoming Meetings

The April Youth County Council meeting was held on April 30th 2024 with 12 members in attendance. We had no dog advisory, horse advisory, or livestock advisory reports. Shooting sports has competition entry fees due Saturday May 4th. Small advisory committee is working on judge's for fair. Tabletop committee was working on County Contest, Star Award and County Fair. CSU Extension had all Animal Identification and Project signups due the 30th of April. For committee reports, Laura Richards reported on Summer Fest, where the theme will be color and there will be a \$25 fee per camper. Kaleb Gramsch gave a report on Barn Olympics. For fundraising, our April fundraiser on the 30th was Modern Market Eatery. Our next fundraiser will be in May at Smashburger. Cam's Academy is still accepting recipients to help promote agriculture within the community at fair. During new business, Jen went over Cake Builders Academy, it will be a combination of design and engineering. On May 21st we will have visitors from Oklahoma coming to our officer meeting.

Our next YCC meeting will be held on May 28th at 6:30 pm located at El Paso County Veterans Services.

Thanks, Conner Holiday



4-H Garage Sale



El Paso County 4-H Foundation

100% of Funds raised goes towards 4-H youth support



Garage Sale! **Crafters!** **Businesses Welcome!**



When: June 15, 2024 8:00 a.m. – 2:00 p.m.
Set up between 7:00 & 7:30 a.m.

Where: El Paso County Fairgrounds
South Gate - Farmers State Bank Pavilion (Dance Tent) area

Limited availability, you must bring your own table (and canopy if desired for uncovered spaces).

Bring your table and items for sale, items not sold must go home with you!

To participate, please e-mail Kathy @ epc4HFoundation1@gmail.com

Covered Spaces (under the Pavilion) available for **\$20** donation

Uncovered Spaces (outside of the Pavilion) available for **\$10** donation

Cash donations for your space will be collected at check-in before you set up

Facts about our Sale:

EACH AREA WILL BE 10' X 10'.

Remember, we support 4-H youth development – your sale items should be appropriate content for all ages. If in doubt, please leave it out...



WHAT HAPPENS TO THE MONEY YOU COLLECT?? YOU (OR YOUR CLUB) KEEP IT

You are responsible for setting up your space, tearing it down and removing your items at the end of the garage sale.

Want to rent more than one space?? Let us know and we'll try to make it happen!



COLORADO SPRINGS “GET OUTDOORS” DAY!



Hosted by: Colorado Parks & Wildlife,
the City of Colorado Springs
& the Pikes Peak Outdoor Recreation Alliance

JUNE 1, 2024
9:00 AM - 2:00 PM

**4-H Members and Volunteers are invited to
“Get Outdoors!” & promote 4-H during The
Get Outdoors Day in Memorial Park!**

1605 E Pikes Peak Ave, Colorado Springs, CO 80910

**Scan the QR
Code to Sign-
up Today!**



**Volunteers will promote the 4-H Program &
help participants build & launch
Straw Rockets!**



**This event is designed to promote 4-H
Shooting Sports, but any and all 4-H members
are invited to attend & participate!
This event is a 4-H
Leadership Activity!**



EL PASO COUNTY
COLORADO STATE UNIVERSITY
EXTENSION



AT THE

Colorado Stampede
RODEO

MAY 25 & 26, 2024

LOMA OUTLAWS 4-H CLUB LIVESTOCK JACKPOT

MESA COUNTY FAIRGROUNDS

2785 US HWY 50 GRAND JUNCTION, COLORADO

-UNITED ARENA-

SWINE * LAMBS * GOATS - \$20/HEAD

BEEF - \$30/HEAD

SATURDAY, MAY 25TH

SUNDAY, MAY 26TH

BREEDING HEIFERS - 10AM

SWINE - 10AM

MARKET BEEF - 11AM

LAMBS - 12 PM

BEEF ARE BLOW AND GO ONLY

GOATS - 2PM

CASH PAYOUTS

BUCKLES

BANNERS

PRIZES

SHOWMANSHIP- will follow market classes \$15 - Peewee 4-7, Junior 8-13, Intermediate 14-17, Senior 18-21 - As of January 1st, 2024

Registration opens at 8 am and closes one hour before each show - **CASH ONLY**

Trailer stalling only

\$50 for reserved trailer spots- Very limited availability close to the arena-
Text: 970-623-9406 to reserve

For more information

Melissa Stocking
Text only at- 970-778-2485
or lomaoutlawshclub@gmail.com



[June 1st Link](#)

[June 2nd Air Link](#)

[June 2nd Shotgun Link](#)

Weld County Shooting Sports Invationals

June 1st

Archery, .22 Rifle, .22
Pistol and Muzzleloading

Register at:

<https://www.signupgenius.com/go/20F0A4DAFAC29A2F49-48909513-weld>

- 8:00 AM Check-in and pay for classes
- 9:00 AM Contest Begins
- Junior and Senior Divisions
- Classes include: Archery (1 per member), .22 Rifle, .22 Pistol (Intermediate and Seniors ONLY), and Muzzleloading
- Maximum of 4 classes per member
- \$7/class if preregistered; \$14 if not preregistered.
- Preregistration closes May 29th to avoid late fee of \$14
- Location: South Platte Historical Society Range; 2001 Historic Parkway, Ft. Lupton

June 2nd

Shotgun Only

Register at:

<https://www.signupgenius.com/go/20F0A4DAFAC29A2F49-48909542-weld>

- 7:30 AM Check-in and pay for classes
- 8:00 AM Contest Begins
- Junior and Senior Divisions
- Classes include: Skeet and Trap, 2 Rounds of each
- \$16/class if preregistered; \$21 if not preregistered.
- Preregistration closes May 29th to avoid late fee
- Location: Weld County Fish and Wildlife; 38997 CR 51, Eaton, CO

June 2nd

Air Only

Register at:

<https://www.signupgenius.com/go/20F0A4DAFAC29A2F49-48909544-weld>

- 8:00 AM Check-in and pay for classes
- 8:30 AM Contest Begins
- Junior and Senior Divisions
- Classes include: Air Rifle and Air Pistol
- \$7/class if preregistered; \$14 if not preregistered.
- Preregistration closes May 29th to avoid late fee
- Location: Livestock Barn, Island Grove Park, 529 N 15th Ave, Greeley

Concessions will be available at Ft. Lupton and Galeton

Registration Questions contact Ray Sagehorn: 720-244-0238

Other Questions: Kim Eastwood, keastwood@weld.gov

Colorado 4-H Shooting Sports Rulebook: <https://co4h.colostate.edu/ss/ss-rulebook.pdf>

Orion Scoring will be used

Liability Waivers and Hold Harmless are required at both ranges. These can be found at:

https://drive.google.com/drive/folders/1vptQT5ELTrKV_UAnOaD6vuyjySK8Mxd?usp=sharing. Be sure to DOWNLOAD these before filling out

FREMONT COUNTY DOGS SHOWS

AT PATHFINDER PARK EVENT CENTER
6655 STATE HWY 115, FLORENCE CO 81226

**JUNE
9TH**

AND

**JULY
6TH**

Check in from 8:00 AM- 8:30 AM. 8:30 AM, take
showmanship test. Show starts at 9 AM

Entry fee is \$8.00 per class per dog. Pay dogs leaders
at check-in. We accept cash or checks, made payable
to Fremont County 4-H



Call the office at 719-276-7390 with any questions!

Online Entry Form [HERE](#)



Arapahoe County 4-H Spring Dog Fun Match

Sponsored by the Arapahoe County 4-H Companion Animal Committee

Date: Saturday May 11, 2024

Registration: 8am – 9am

Judging Begins: 9am

Location: Arapahoe County

Fairgrounds, 25690 E Quincy Ave,
Aurora CO 80016

Entry fees: \$20 per exhibitor if preregistered by May 4th or \$25 for day of show.
Preregistration is highly encouraged.

All fees are due day of show payable by cash or check.

All dogs are required to be current on vaccinations.



Online form can be found at <https://forms.office.com/r/d3z2enf2TA> or by scanning the QR code below.

Showmanship, Obedience and Rally

Costume and Best Trick Contests

Adult Showmanship

Awards

1st - 6th place ribbons.

Overall High Point Exhibitor prizes for each age group



Don't miss our fantastic auction items!

Concession with snacks and drinks will be offered.

Questions?

debbie.cuvelier@yahoo.com or 303-261-7037

PAWS & CLAWS



DOG SHOW MAY 11TH, 2024

CONCESSION STAND

\$5 PER MEMBER, \$5 PER DOG
\$5 OFFICE FEE, CASH OR CHECK
PAY AT THE DOOR

Silent Auction

**ITEMS COLLECTED UP
UNTIL START OF SHOW**

MAKE CHECKS OUT TO

"PUEBLO COUNTY PAWS AND CLAWS"

REGISTER ON 4HONLINE NOW!

1001 BEULAH AVE PUEBLO CO 81004

LIVESTOCK PAVILION



COLORADO STATE UNIVERSITY EXTENSION IS AN EQUAL OPPORTUNITY PROVIDER. COLORADO STATE UNIVERSITY EXTENSION IS APPROVED BY THE OFFICE OF HIGHER EDUCATION. COLORADO STATE UNIVERSITY DOES NOT DISCRIMINATE ON THE BASIS OF DISABILITY AND IS COMMITTED TO PROVIDING REASONABLE ACCOMMODATIONS. COLORADO STATE UNIVERSITY HAS PROCEDURES FOR INDIVIDUALS WITH DISABILITIES TO BE CONTACTED AT PROPRIOU@CSU.PUEBLO.CO. CSU'S OFFICE OF ENGAGEMENT AND OUTREACH SERVICES MANAGES, ACCESSES AND ISSUES OPPORTUNITIES TO PARTICIPATE TO INDIVIDUALS WHOSE FIRST LANGUAGE IS NOT ENGLISH. OFFICE OF ENGAGEMENT AND EXTENSION IS AN EQUAL OPPORTUNITY PROVIDER. COLORADO STATE UNIVERSITY EXTENSION IS APPROVED BY THE OFFICE OF HIGHER EDUCATION. COLORADO STATE UNIVERSITY DOES NOT DISCRIMINATE ON THE BASIS OF DISABILITY AND IS COMMITTED TO PROVIDING REASONABLE ACCOMMODATIONS. COLORADO STATE UNIVERSITY HAS PROCEDURES FOR INDIVIDUALS WITH DISABILITIES TO BE CONTACTED AT PROPRIOU@CSU.PUEBLO.CO.



Douglas County 4-H

DOUGLAS COUNTY FAIRGROUNDS, CASTLE ROCK, CO

• HORSE CAMP 2024 •

JUNE 10-14

TENTATIVE SCHEDULE* SUBJECT TO CHANGE**

SCHEDULE OF EVENTS

Every day will focus on various horsemanship skills during the morning and afternoon lesson sessions. Other times during the day, youth will be involved in horse related activities, learning demonstrations, and team building. (Lunch will be provided).

MONDAY, JUNE 10TH -- LEVELS TESTING & WARM-UP

9:00-11:00 a.m. Levels (2 and up) Testing by Appointment ONLY
you will be e-mailed an appointment time!
*Space is limited

The afternoon session will focus on groundwork, driving demonstrations, yoga, and free ride time.

TUESDAY, JUNE 11TH -- ENGLISH/POLO

Spend the day in your English saddle learning about equitation, control, patterns, foundation skills, over fences and vaulting. Helmets are REQUIRED.

WEDNESDAY, JUNE 12TH -- WESTERN/SHOWMANSHIP

This day, you'll be working all day in your western tack, challenging yourself with equitation, horsemanship patterns, and showmanship sessions.

THURSDAY, JUNE 13TH -- GYMKHANA/TRAIL

Learn training and showing techniques in both trail and gymkhana, with an opportunity to try trail obstacles and gymkhana events!

FRIDAY, JUNE 14TH -- WORKING RANCH HORSE CLINIC

Instruction in Ranch Riding, Cow Work, Trail. This is a separate Registration and clinic fee.

SATURDAY, JUNE 15TH -- DC 4-H BUCKLE SERIES

A separate entry fee for the Buckle Series - Follow Douglas County 4-H Buckle Series on Facebook!

****Limited Camping Spots available on a first come, first serve basis. Please e-mail Mercedes at Mercedes.Glenn@colostate.edu to reserve your spot**

CAMPING SPOTS \$50
STALLS \$25 DEPOSIT
ADDITIONAL T-SHIRTS \$30

****Youth must be with an adult at all times, they are not allowed to camp alone.**

****In order to participate you MUST be a 4-H member enrolled in the 4-H Horse Project**

OUT OF COUNTY MEMBERS- AN ADULT 4-H LEADER MUST BE ONSITE WITH YOU EACH DAY!



DOUGLAS COUNTY
COLORADO STATE UNIVERSITY
EXTENSION

DOUGLAS COUNTY 4-H PRESENTS

4-H HORSE CAMP

Monday: Levels testing*, yoga, driving demo *Levels testing is limited and will only be for riders testing Level 2 and up

Tuesday: English Skills, Patterns, Over Fences & Vaulting

Wednesday: Western skills, Patterns, Showmanship, & Trail

Thursday: Gymkhana, Flags, & Mounted Games

COST:

MONDAY-THURSDAY: \$135

-INCLUDES LUNCH AND A T-SHIRT OR \$50/DAY

**WORKING RANCH HORSE CLINIC: \$85

ON FRIDAY, JUNE 14TH

***please see the separate registration for the WRH Clinic

DC 4-H Horse Camp is limited to 4-H members in the Horse Project

Please register (with payment) via **4HOnline** no later than May 26 by 5 p.m.

*please make checks out to DC Horse Steering Committee & mail to: 410 Fairgrounds Rd | Castle Rock, CO 80104

REGISTRATION THROUGH 4HONLINE!

For more information e-mail Mercedes.Glenn@colostate.edu

If participating in 3 out of 5 days of the DC Horse Camp you will be eligible to participate in the Buckle Series Show on Saturday, June 15th for half off entry fees!



Douglas County 4-H
Youth Council



JUNE LIVESTOCK SHOW



SAVE THE DATE

DOUGLAS COUNTY FAIRGROUNDS

June 7 & 8, 2024

FRIDAY, JUNE 7 ~
MARKET HOGS

SATURDAY, JUNE 8 ~
MARKET BEEF,
DAIRY GOATS,
MARKET GOATS, AND
MARKET SHEEP

CONTACT JACIE.REX@COLOSTATE.EDU OR
MERCEDES.GLENN@COLOSTATE.EDU WITH FURTHER QUESTIONS

HIPPOLOGY CONTEST!!!



SAVE THE DATE

MAY 18, 2024
@ RBC Fairgrounds

LOCATED IN MEEKER, CO

PRIZES AWARDED!!

**COME GET YOUR FEET WET AND
TEST YOUR HORSE KNOWLEDGE!!!**

Questions call (970)878-9490

❖

***INDIVIDUALS WELCOME**

***NO TEAMS REQUIRED**

***BEGINNERS WELCOME
(8+ years old)**

❖

HIPPOLOGY: THE STUDY OF HIPPOS HORSES



2024
Arapahoe County Red Carpet
Prospect Show
Saturday, May 18th

Weigh-In

- Beef - 7:00 - 8:00 a.m.
- Lamb & Goat - 7:00 - 9:00 a.m.

Show Order of Events

- **NEW:** Market followed by Breeding prospects
- Beef show will begin at 9:00 a.m. with market beef
- Goat show will begin shortly after conclusion of the beef show
- Lamb show will begin shortly after conclusion of the goat show

Entry fees - No pre-entry, enter day of show

- \$25 per animal entry & \$10 for showmanship

Pens

- \$15 - first come, first serve day of the show

*Ribbons & premiums
PLUS added money &
prizes!!!*

Arapahoe County Fairgrounds

**25690 E Quincy Ave
Aurora, CO 80016**



ARAPAHOE COUNTY
COLORADO STATE UNIVERSITY
EXTENSION

Hosted by the Arapahoe County 4-H Junior

Livestock Committee

For questions email:

hhenderson@arapahoegov.com



WHAT IT TAKES 2B BETTER

With Justin Niccoli
from Niccoli Livestock

2 DAY BUCKLE UP SHOW CAMP



**May 31-June 1, 2024 @
COLORADO STATE FAIR
LIVESTOCK PAVILION**

**COST :
\$125 PER CAMPER**

**Over Night Camping \$45
Stalling \$10
Dorms FREE**

**OPEN TO ALL 4-H/FFA
MARKET GOAT & LAMB
EXHIBITORS**

- Topics:**
- proper fitting
 - feeds
 - showmanship
 - MUCH MORE

**Hosted by Pueblo County 4-H
Register on 4HOnline**

**Campers will need to bring
(1-2) goats/lambs and all
grooming supplies**

**Contact Alyssa Tate
for more info
(719) 431-3812**

Colorado State University Extension is an equal opportunity provider. | Colorado State University Extension es un proveedor que ofrece igualdad de oportunidades.

Colorado State University does not discriminate on the basis of disability and is committed to providing reasonable accommodations. | Colorado State University no discrimina por motivos de discapacidad y se compromete a proporcionar adaptaciones razonables.

CSU's Office of Engagement and Extension ensures meaningful access and equal opportunities to participate to individuals whose first language is not English. | Office of Engagement and Extension de CSU garantiza acceso significativo e igualdad de oportunidades para participar a las personas quienes su primer idioma no es el inglés.

CSU/CSU/CSU